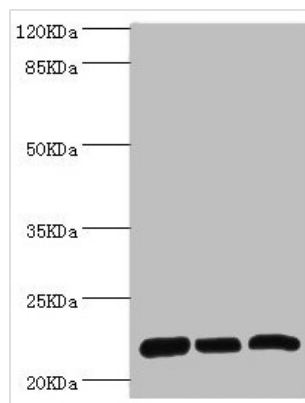




# RPL9 Antibody

<b>Product Code</b>	CSB-PA020326ESR2HU
<b>Storage</b>	Upon receipt, store at -20°C or -80°C. Avoid repeated freeze.
<b>Uniprot No.</b>	P32969
<b>Immunogen</b>	Recombinant Human 60S ribosomal protein L9 protein (1-192AA)
<b>Raised In</b>	Rabbit
<b>Species Reactivity</b>	Human
<b>Tested Applications</b>	ELISA, WB, IHC; Recommended dilution: WB:1:1000-1:5000, IHC:1:20-1:200
<b>Form</b>	Liquid
<b>Conjugate</b>	Non-conjugated
<b>Storage Buffer</b>	PBS with 0.02% sodium azide, 50% glycerol, pH7.3.
<b>Purification Method</b>	Antigen Affinity Purified
<b>Isotype</b>	IgG
<b>Clonality</b>	Polyclonal
<b>Alias</b>	60S ribosomal protein L9 (Large ribosomal subunit protein uL6), RPL9; RPL9P7; RPL9P8; RPL9P9, ;
<b>Immunogen Species</b>	Homo sapiens (Human)
<b>Research Area</b>	Others
<b>Target Names</b>	RPL9

## Image



### Western blot

All lanes: RPL9 antibody at 0.61µg/ml

Lane 1: SY-5Y whole cell lysate

Lane 2: Hela whole cell lysate

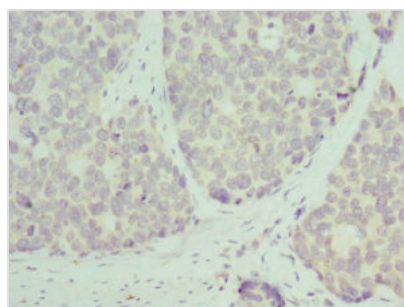
Lane 3: HepG2 whole cell lysate

Secondary

Goat polyclonal to rabbit IgG at 1/10000 dilution

Predicted band size: 22 kDa

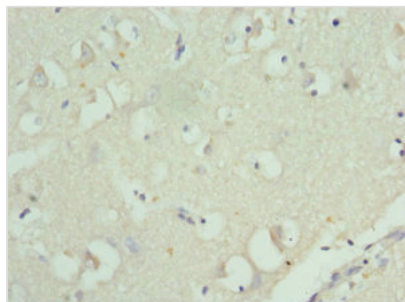
Observed band size: 22 kDa



Immunohistochemistry of paraffin-embedded

human gastric cancer using CSB-

PA020326ESR2HU at dilution of 1:100



Immunohistochemistry of paraffin-embedded human brain tissue using CSB-PA020326ESR2HU at dilution of 1:100

**Usage**

For Research Use Only. Not for use in diagnostic or therapeutic procedures.