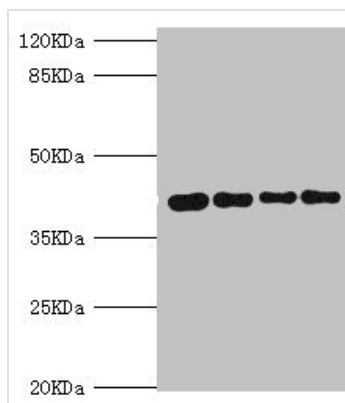




# SEPHS1 Antibody

<b>Product Code</b>	CSB-PA021015ESR2HU
<b>Storage</b>	Upon receipt, store at -20°C or -80°C. Avoid repeated freeze.
<b>Uniprot No.</b>	P49903
<b>Immunogen</b>	Recombinant Human Selenide, water dikinase 1 protein (1-392AA)
<b>Raised In</b>	Rabbit
<b>Species Reactivity</b>	Human, Mouse
<b>Tested Applications</b>	ELISA, WB, IHC; Recommended dilution: WB:1:1000-1:5000, IHC:1:20-1:200
<b>Form</b>	Liquid
<b>Conjugate</b>	Non-conjugated
<b>Storage Buffer</b>	PBS with 0.02% sodium azide, 50% glycerol, pH7.3.
<b>Purification Method</b>	Antigen Affinity Purified
<b>Isotype</b>	IgG
<b>Clonality</b>	Polyclonal
<b>Alias</b>	Selenide, water dikinase 1 (EC 2.7.9.3) (Selenium donor protein 1) (Selenophosphate synthase 1), SEPHS1, SELD SPS SPS1
<b>Immunogen Species</b>	Homo sapiens (Human)
<b>Research Area</b>	Cell Biology
<b>Target Names</b>	SEPHS1

## Image



### Western blot

All lanes: SEPHS1 antibody at 3.05μg/ml

Lane 1: Mouse liver tissue

Lane 2: HepG2 whole cell lysate

Lane 3: Mouse kidney tissue

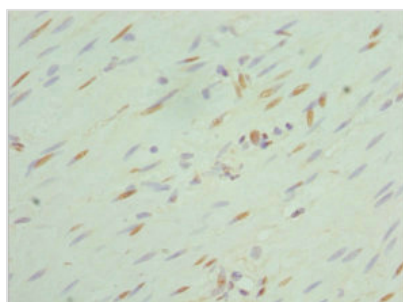
Lane 4: U251 whole cell lysate

Secondary

Goat polyclonal to rabbit IgG at 1/10000 dilution

Predicted band size: 43, 36 kDa

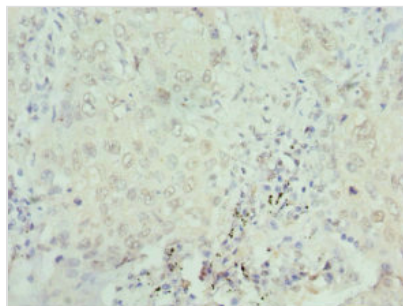
Observed band size: 43 kDa



Immunohistochemistry of paraffin-embedded

human colon cancer using CSB-

PA021015ESR2HU at dilution of 1:100



Immunohistochemistry of paraffin-embedded human lung cancer using CSB-PA021015ESR2HU at dilution of 1:100