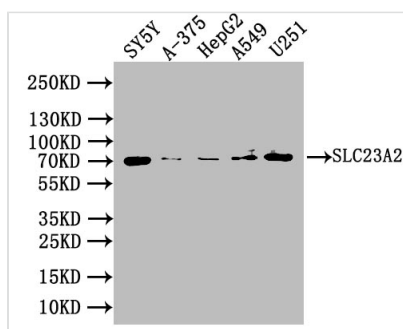




SLC23A2 Antibody

Product Code	CSB-PA866221DSR2HU
Storage	Upon receipt, store at -20°C or -80°C. Avoid repeated freeze.
Uniprot No.	Q9UGH3
Immunogen	Recombinant Human Solute carrier family 23 member 2 protein (1-90AA)
Raised In	Rabbit
Species Reactivity	Human
Tested Applications	ELISA, WB, IHC; Recommended dilution: WB:1:1000-1:5000, IHC:1:20-1:200
Form	Liquid
Conjugate	Non-conjugated
Storage Buffer	PBS with 0.02% sodium azide, 50% glycerol, pH7.3.
Purification Method	Antigen Affinity Purified
Isotype	IgG
Clonality	Polyclonal
Product Type	Polyclonal Antibody
Immunogen Species	Homo sapiens (Human)
Research Area	Signal Transduction
Target Names	SLC23A2

Image



Western Blot

Positive WB detected in: SY5Y whole cell lysate, A-375 whole cell lysate, HepG2 whole cell lysate, A549 whole cell lysate, U251 whole cell lysate

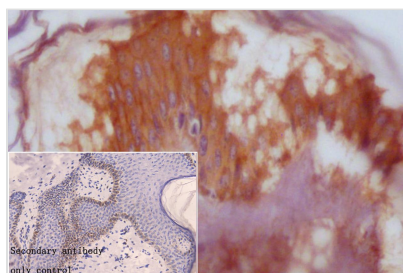
All lanes: SLC23A2 antibody at 1:1000

Secondary

Goat polyclonal to rabbit IgG at 1/50000 dilution

Predicted band size:70 kDa

Observed band size: 70 kDa



IHC image of CSB-PA866221DSR2HU diluted at 1:50 and staining in paraffin-embedded human skin tissue performed on a Leica Bond™ system. After dewaxing and hydration, antigen retrieval was mediated by high pressure in a citrate buffer (pH 6.0). Section was blocked with 10% normal goat serum 30min at RT. Then primary antibody (1% BSA) was incubated at 4°C overnight. The primary is detected by a Goat anti-rabbit polymer IgG labeled by HRP and visualized using 0.05% DAB. Secondary antibody only control: uses 1% BSA instead of primary antibody



Usage

For Research Use Only. Not for use in diagnostic or therapeutic procedures.