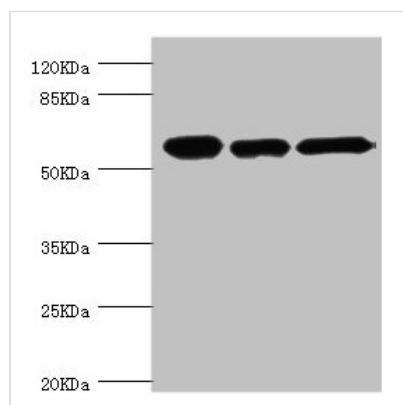




CCT2 Antibody

Product Code	CSB-PA004856ESR1HU
Storage	Upon receipt, store at -20°C or -80°C. Avoid repeated freeze.
Uniprot No.	P78371
Immunogen	Recombinant Human T-complex protein 1 subunit beta protein (206-535AA)
Raised In	Rabbit
Species Reactivity	Human
Tested Applications	ELISA, WB, IHC, IP; Recommended dilution: WB:1:1000-1:5000, IHC:1:20-1:200, IP:1:200-1:2000
Form	Liquid
Conjugate	Non-conjugated
Storage Buffer	PBS with 0.02% sodium azide, 50% glycerol, pH7.3.
Purification Method	Antigen Affinity Purified
Isotype	IgG
Clonality	Polyclonal
Alias	T-complex protein 1 subunit beta (TCP-1-beta) (CCT-beta), CCT2, 99D8.1 CCTB
Immunogen Species	Homo sapiens (Human)
Research Area	Signal Transduction
Target Names	CCT2

Image



Western blot

All lanes: CCT2 antibody at 5.63μg/ml

Lane 1: Jurkat whole cell lysate

Lane 2: NIH/3T3 whole cell lysate

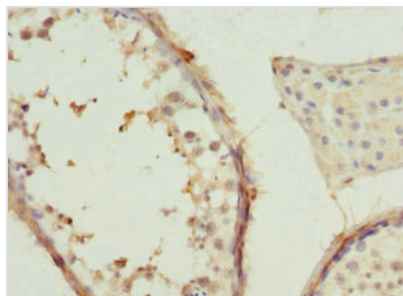
Lane 3: MCF-7 whole cell lysate

Secondary

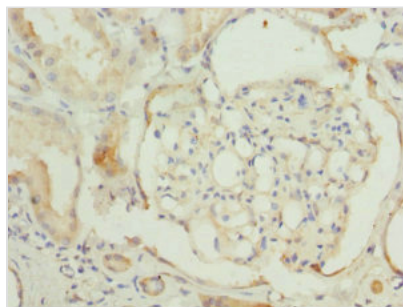
Goat polyclonal to rabbit IgG at 1/10000 dilution

Predicted band size: 58, 53 kDa

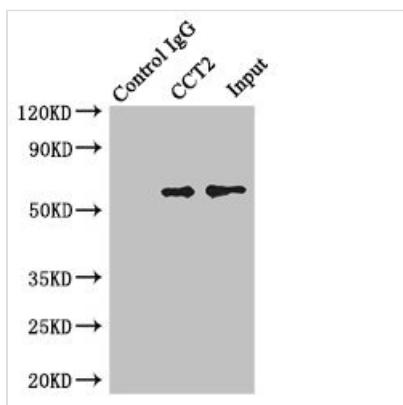
Observed band size: 58 kDa



Immunohistochemistry of paraffin-embedded human testis tissue using CSB-PA004856ESR1HU at dilution of 1:100



Immunohistochemistry of paraffin-embedded human kidney tissue using CSB-PA004856ESR1HU at dilution of 1:100



Immunoprecipitating CCT2 in Jurkat whole cell lysate

Lane 1: Rabbit control IgG instead of (1μg)

instead of CSB-PA004856ESR1HU in Jurkat whole cell lysate. For western blotting, a HRP-conjugated light chain specific antibody was used as the Secondary antibody (1/50000)

Lane 2: CSB-PA004856ESR1HU (4μg) + Jurkat whole cell lysate (500μg)

Lane 3: Jurkat whole cell lysate (20μg)