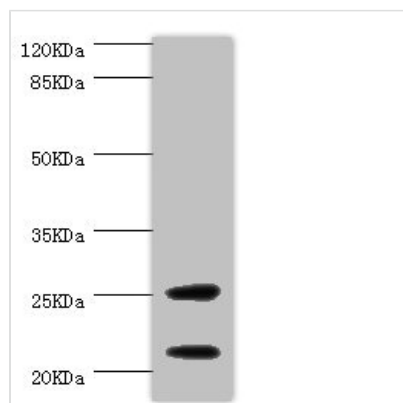




CSRP3 Antibody

Product Code	CSB-PA006087ESR2HU
Storage	Upon receipt, store at -20°C or -80°C. Avoid repeated freeze.
Uniprot No.	P50461
Immunogen	Recombinant Human Cysteine and glycine-rich protein 3 protein (1-194AA)
Raised In	Rabbit
Species Reactivity	Human, Mouse
Tested Applications	ELISA, WB, IHC; Recommended dilution: WB:1:1000-1:5000, IHC:1:20-1:200
Form	Liquid
Conjugate	Non-conjugated
Storage Buffer	PBS with 0.02% sodium azide, 50% glycerol, pH7.3.
Purification Method	Antigen Affinity Purified
Isotype	IgG
Clonality	Polyclonal
Alias	Cysteine and glycine-rich protein 3 (Cardiac LIM protein) (Cysteine-rich protein 3) (CRP3) (LIM domain protein, cardiac) (Muscle LIM protein), CSRP3, CLP MLP
Immunogen Species	Homo sapiens (Human)
Research Area	Epigenetics and Nuclear Signaling
Target Names	CSRP3

Image



Western blot

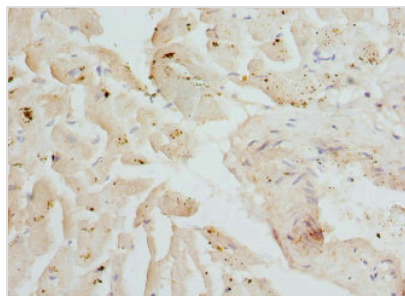
All lanes: CSRP3 antibody at 1µg/ml + Mouse skeletal muscle tissue

Secondary

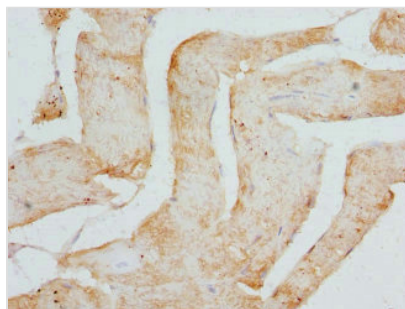
Goat polyclonal to rabbit IgG at 1/10000 dilution

Predicted band size: 21 kDa

Observed band size: 21, 25 kDa



Immunohistochemistry of paraffin-embedded human heart tissue using CSB-PA006087ESR2HU at dilution of 1:100



Immunohistochemistry of paraffin-embedded human skeletal muscle tissue using CSB-PA006087ESR2HU at dilution of 1:100

Usage

For Research Use Only. Not for use in diagnostic or therapeutic procedures.