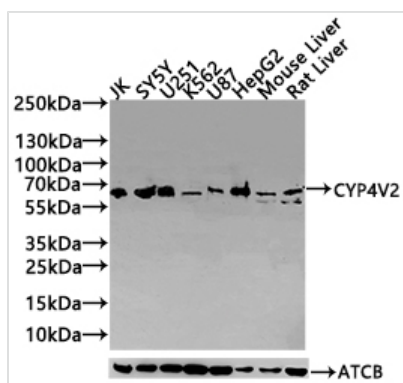




# CYP4V2 Antibody

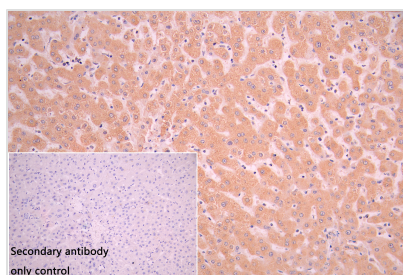
<b>Product Code</b>	CSB-PA765094ESR2HU
<b>Storage</b>	Upon receipt, store at -20°C or -80°C. Avoid repeated freeze.
<b>Uniprot No.</b>	Q6ZWL3
<b>Immunogen</b>	Recombinant Human Cytochrome P450 4V2 protein (246-525AA)
<b>Raised In</b>	Rabbit
<b>Species Reactivity</b>	Human, Mouse, Rat
<b>Tested Applications</b>	ELISA, WB, IHC; Recommended dilution: WB:1:500-1:2000, IHC:1:20-1:200
<b>Form</b>	Liquid
<b>Conjugate</b>	Non-conjugated
<b>Storage Buffer</b>	Preservative: 0.03% Proclin 300 Constituents: 50% Glycerol, 0.01M PBS, pH 7.4
<b>Purification Method</b>	Antigen Affinity Purified
<b>Isotype</b>	IgG
<b>Clonality</b>	Polyclonal
<b>Product Type</b>	Polyclonal Antibody
<b>Immunogen Species</b>	Homo sapiens (Human)
<b>Research Area</b>	Cardiovascular
<b>Target Names</b>	CYP4V2

## Image



### Western Blot

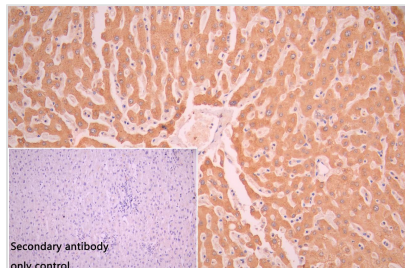
Positive WB detected in: JK whole cell lysate(30µg), SY5Y whole cell lysate(30µg), U251 whole cell lysate(30µg), K562 whole cell lysate(30µg), U87 whole cell lysate(30µg), HepG2 whole cell lysate(30µg), Mouse Liver tissue lysate(30µg)?Rat Liver tissue lysate(30µg)  
All lanes: CYP4V2 antibody at 1:1000  
Secondary  
Goat polyclonal to rabbit IgG at 1/20000 dilution  
Predicted band size: 61,59 kDa  
Observed band size: 61,59 kDa  
Exposure time: 120s



IHC image of CSB-PA765094ESR2HU diluted at 1:50 and staining in paraffin-embedded human Liver tissue performed on a Leica Bond™ system. After dewaxing and hydration, antigen retrieval was mediated by high pressure in a citrate buffer (pH 6.0). Section was blocked with 10% normal goat serum 30min at RT. Then primary antibody (1% BSA) was incubated at 4°C overnight. The primary is detected by a Goat



anti-rabbit polymer IgG labeled by HRP and visualized using 0.05% DAB. Secondary antibody only control: uses 1% BSA instead of primary antibody



IHC image of CSB-PA765094ESR2HU diluted at 1:50 and staining in paraffin-embedded human Liver cancer performed on a Leica Bond™ system. After dewaxing and hydration, antigen retrieval was mediated by high pressure in a citrate buffer (pH 6.0). Section was blocked with 10% normal goat serum 30min at RT. Then primary antibody (1% BSA) was incubated at 4°C overnight. The primary is detected by a Goat anti-rabbit polymer IgG labeled by HRP and visualized using 0.05% DAB. Secondary antibody only control: uses 1% BSA instead of primary antibody

## Usage

For Research Use Only. Not for use in diagnostic or therapeutic procedures.