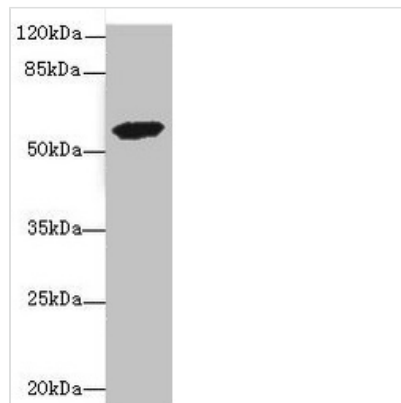




ETFDH Antibody

Product Code	CSB-PA619056ESR2HU
Storage	Upon receipt, store at -20°C or -80°C. Avoid repeated freeze.
Uniprot No.	Q16134
Immunogen	Recombinant Human Electron transfer flavoprotein-ubiquinone oxidoreductase, mitochondrial protein (318-617AA)
Raised In	Rabbit
Species Reactivity	Human
Tested Applications	ELISA, WB, IHC, IF; Recommended dilution: WB:1:500-1:2000, IHC:1:20-1:200, IF:1:50-1:200
Form	Liquid
Conjugate	Non-conjugated
Storage Buffer	PBS with 0.02% sodium azide, 50% glycerol, pH7.3.
Purification Method	Antigen Affinity Purified
Isotype	IgG
Clonality	Polyclonal
Alias	Electron transfer flavoprotein-ubiquinone oxidoreductase, mitochondrial (ETF-QO) (ETF-ubiquinone oxidoreductase) (EC 1.5.5.1) (Electron-transferring-flavoprotein dehydrogenase) (ETF dehydrogenase), ETFDH
Immunogen Species	Homo sapiens (Human)
Research Area	Tags & Cell Markers
Target Names	ETFDH

Image



Western blot

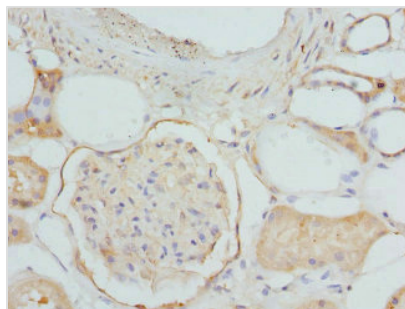
All lanes: ETFDH antibody at 3.56µg/ml + 293T whole cell lysate

Secondary

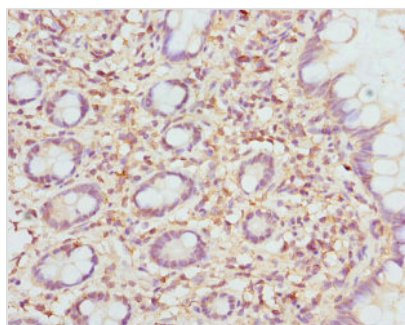
Goat polyclonal to rabbit IgG at 1/10000 dilution

Predicted band size: 69, 63 kDa

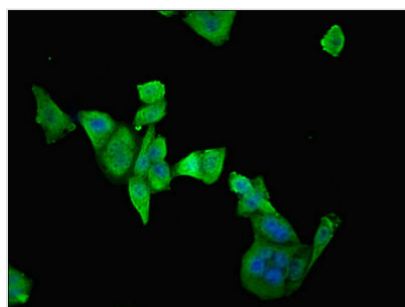
Observed band size: 63 kDa



Immunohistochemistry of paraffin-embedded human kidney tissue using CSB-PA619056ESR2HU at dilution of 1:100



Immunohistochemistry of paraffin-embedded human small intestine tissue using CSB-PA619056ESR2HU at dilution of 1:100



Immunofluorescent analysis of PC-3 cells using CSB-PA619056ESR2HU at dilution of 1:100 and Alexa Fluor 488-conjugated AffiniPure Goat Anti-Rabbit IgG(H+L)

Usage

For Research Use Only. Not for use in diagnostic or therapeutic procedures.