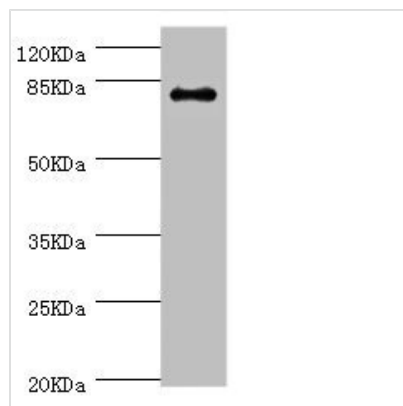




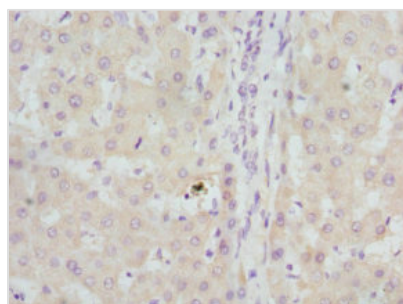
GBE1 Antibody

Product Code	CSB-PA754361ESR2HU
Storage	Upon receipt, store at -20°C or -80°C. Avoid repeated freeze.
Uniprot No.	Q04446
Immunogen	Recombinant Human 1,4-alpha-glucan-branching enzyme protein (1-300AA)
Raised In	Rabbit
Species Reactivity	Human, Mouse
Tested Applications	ELISA, WB, IHC; Recommended dilution: WB:1:1000-1:5000, IHC:1:20-1:200
Form	Liquid
Conjugate	Non-conjugated
Storage Buffer	PBS with 0.02% sodium azide, 50% glycerol, pH7.3.
Purification Method	Antigen Affinity Purified
Isotype	IgG
Clonality	Polyclonal
Alias	1,4-alpha-glucan-branching enzyme (EC 2.4.1.18) (Brancher enzyme) (Glycogen-branching enzyme), GBE1
Immunogen Species	Homo sapiens (Human)
Research Area	Signal Transduction
Target Names	GBE1

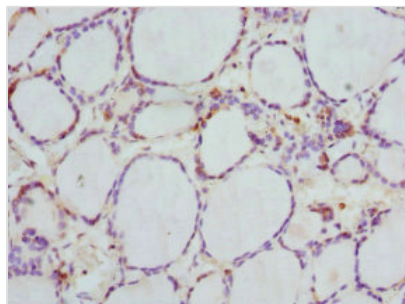
Image



Western blot
 All lanes: GBE1 antibody at 3.13µg/ml + Mouse liver tissue
 Secondary
 Goat polyclonal to rabbit IgG at 1/10000 dilution
 predicted band size 80 kDa
 Observed band size: 80 kDa



Immunohistochemistry of paraffin-embedded human liver tissue using CSB-PA754361ESR2HU at dilution of 1:100



Immunohistochemistry of paraffin-embedded human thyroid tissue using CSB-PA754361ESR2HU at dilution of 1:100

Usage

For Research Use Only. Not for use in diagnostic or therapeutic procedures.