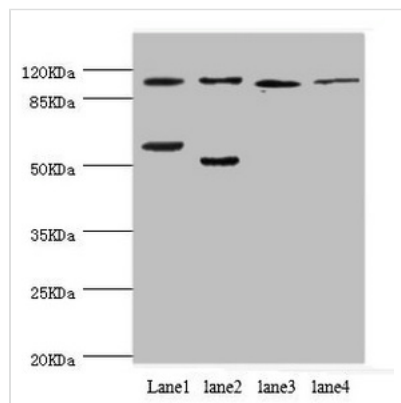




PITRM1 Antibody

Product Code	CSB-PA692283ESR2HU
Storage	Upon receipt, store at -20°C or -80°C. Avoid repeated freeze.
Uniprot No.	Q5JRX3
Immunogen	Recombinant Human Presequence protease, mitochondrial protein (758-1037AA)
Raised In	Rabbit
Species Reactivity	Human, Mouse, Rat
Tested Applications	ELISA, WB, IHC; Recommended dilution: WB:1:1000-1:5000, IHC:1:20-1:200
Form	Liquid
Conjugate	Non-conjugated
Storage Buffer	PBS with 0.02% sodium azide, 50% glycerol, pH7.3.
Purification Method	Antigen Affinity Purified
Isotype	IgG
Clonality	Polyclonal
Alias	Presequence protease, mitochondrial (hPreP) (EC 3.4.24.-) (Pitriysin metalloproteinase 1) (Metalloprotease 1) (hMP1), PITRM1, KIAA1104 MP1
Immunogen Species	Homo sapiens (Human)
Research Area	Cell Biology
Target Names	PITRM1

Image



Western blot

All lanes: PITRM1 antibody at 2.42µg/ml

Lane 1: Mouse placenta tissue

Lane 2: A549 whole cell lysate

Lane 3: Rat gonad tissue

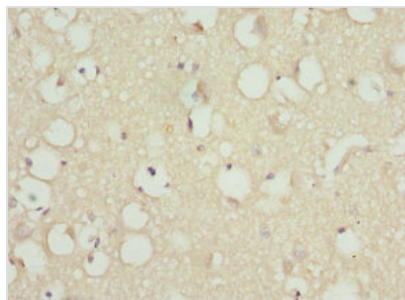
Lane 4: Mouse kidney tissue

Secondary

Goat polyclonal to rabbit IgG at 1/10000 dilution

Predicted band size: 118, 107 kDa

Observed band size: 118, 50 kDa



Immunohistochemistry of paraffin-embedded human brain tissue using CSB-PA692283ESR2HU at dilution of 1:100



Immunohistochemistry of paraffin-embedded human skeletal muscle tissue using CSB-PA692283ESR2HU at dilution of 1:100

Usage

For Research Use Only. Not for use in diagnostic or therapeutic procedures.