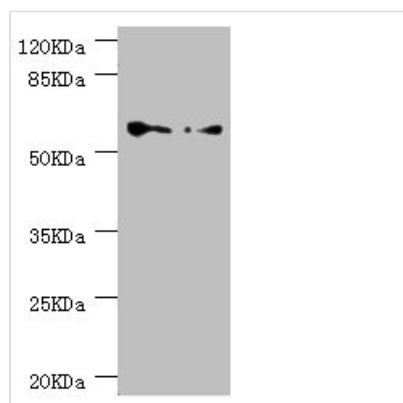




CCT5 Antibody

Product Code	CSB-PA004862ESR1HU
Storage	Upon receipt, store at -20°C or -80°C. Avoid repeated freeze.
Uniprot No.	P48643
Immunogen	Recombinant Human T-complex protein 1 subunit epsilon protein (1-270AA)
Raised In	Rabbit
Species Reactivity	Human
Tested Applications	ELISA, WB, IHC, IP; Recommended dilution: WB:1:500-1:5000, IHC:1:20-1:200, IP:1:200-1:2000
Form	Liquid
Conjugate	Non-conjugated
Storage Buffer	PBS with 0.02% sodium azide, 50% glycerol, pH7.3.
Purification Method	Antigen Affinity Purified
Isotype	IgG
Clonality	Polyclonal
Alias	T-complex protein 1 subunit epsilon (TCP-1-epsilon) (CCT-epsilon), CCT5, CCTE KIAA0098
Immunogen Species	Homo sapiens (Human)
Research Area	Signal Transduction
Target Names	CCT5

Image



Western blot

All lanes: CCT5 antibody at 1.78µg/ml

Lane 1: Hela whole cell lysate

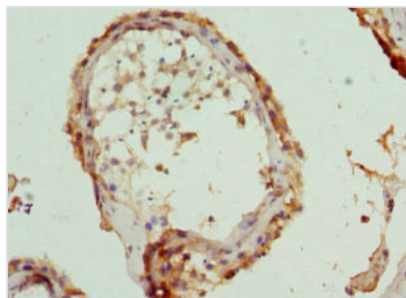
Lane 2: Colo320 whole cell lysate

Secondary

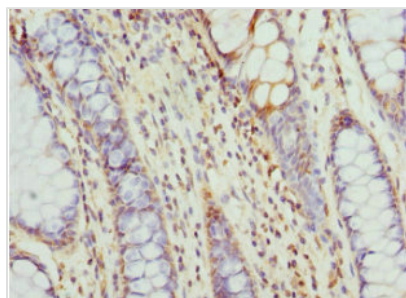
Goat polyclonal to rabbit IgG at 1/10000 dilution

Predicted band size: 60, 50 kDa

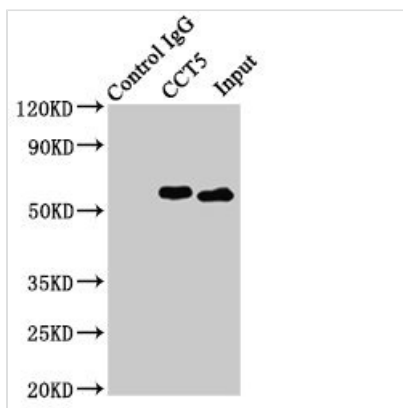
Observed band size: 60 kDa



Immunohistochemistry of paraffin-embedded human testis tissue using CSB-PA004862ESR1HU at dilution of 1:100



Immunohistochemistry of paraffin-embedded human colon cancer using CSB-PA004862ESR1HU at dilution of 1:100



Immunoprecipitating CCT5 in HeLa whole cell lysate

Lane 1: Rabbit control IgG (1µg) instead of CSB-PA004862ESR1HU in HeLa whole cell lysate. For western blotting, a HRP-conjugated Protein G antibody was used as the secondary antibody (1/2000)

Lane 2: CSB-PA004862ESR1HU (8µg) + HeLa whole cell lysate (500µg)

Lane 3: HeLa whole cell lysate (10µg)

Usage

For Research Use Only. Not for use in diagnostic or therapeutic procedures.