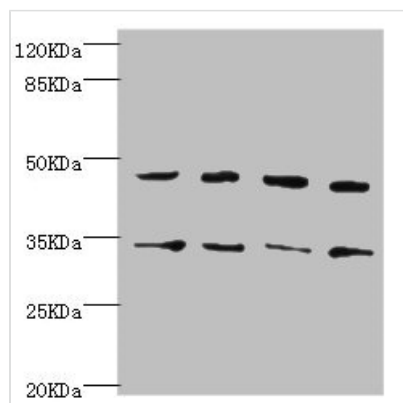




CYTH2 Antibody

Product Code	CSB-PA857445ESR1HU
Storage	Upon receipt, store at -20°C or -80°C. Avoid repeated freeze.
Uniprot No.	Q99418
Immunogen	Recombinant Human Cytohesin-2 protein (150-350AA)
Raised In	Rabbit
Species Reactivity	Human
Tested Applications	ELISA, WB, IHC; Recommended dilution: WB:1:1000-1:5000, IHC:1:20-1:200
Form	Liquid
Conjugate	Non-conjugated
Storage Buffer	PBS with 0.02% sodium azide, 50% glycerol, pH7.3.
Purification Method	Antigen Affinity Purified
Isotype	IgG
Clonality	Polyclonal
Alias	Cytohesin-2 (ARF exchange factor) (ARF nucleotide-binding site opener) (Protein ARNO) (PH, SEC7 and coiled-coil domain-containing protein 2), CYTH2, ARNO PSCD2 PSCD2L
Immunogen Species	Homo sapiens (Human)
Research Area	Signal Transduction
Target Names	CYTH2

Image



Western blot

All lanes: CYTH2 antibody at 5.58µg/ml

Lane 1: U251 whole cell lysate

Lane 2: HepG2 whole cell lysate

Lane 3: MCF-7 whole cell lysate

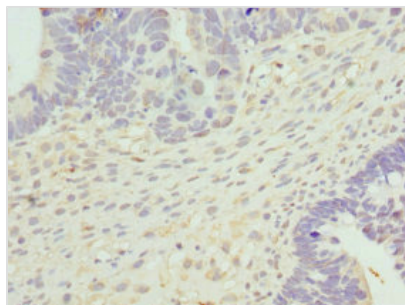
Lane 4: A549 whole cell lysate

Secondary

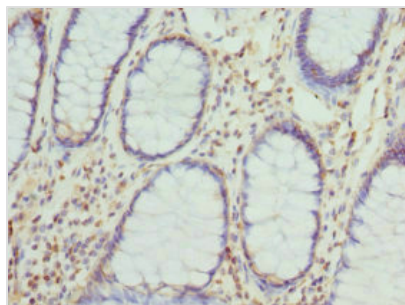
Goat polyclonal to rabbit IgG at 1/10000 dilution

Predicted band size: 47 kDa

Observed band size: 47, 35 kDa



Immunohistochemistry of paraffin-embedded human ovarian cancer using CSB-PA857445ESR1HU at dilution of 1:100



Immunohistochemistry of paraffin-embedded human colon cancer using CSB-PA857445ESR1HU at dilution of 1:100

Usage

For Research Use Only. Not for use in diagnostic or therapeutic procedures.