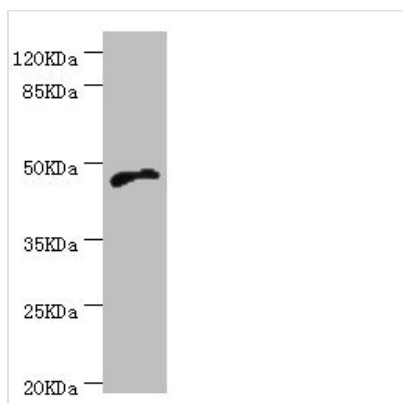




# CYTH2 Antibody

<b>Product Code</b>	CSB-PA857445ESR2HU
<b>Storage</b>	Upon receipt, store at -20°C or -80°C. Avoid repeated freeze.
<b>Uniprot No.</b>	Q99418
<b>Immunogen</b>	Recombinant Human Cytohesin-2 protein (150-350AA)
<b>Raised In</b>	Rabbit
<b>Species Reactivity</b>	Human
<b>Tested Applications</b>	ELISA, WB, IHC; Recommended dilution: WB:1:1000-1:5000, IHC:1:20-1:200
<b>Form</b>	Liquid
<b>Conjugate</b>	Non-conjugated
<b>Storage Buffer</b>	PBS with 0.02% sodium azide, 50% glycerol, pH7.3.
<b>Purification Method</b>	Antigen Affinity Purified
<b>Isotype</b>	IgG
<b>Clonality</b>	Polyclonal
<b>Alias</b>	Cytohesin-2 (ARF exchange factor) (ARF nucleotide-binding site opener) (Protein ARNO) (PH, SEC7 and coiled-coil domain-containing protein 2), CYTH2, ARNO PSCD2 PSCD2L
<b>Immunogen Species</b>	Homo sapiens (Human)
<b>Research Area</b>	Signal Transduction
<b>Target Names</b>	CYTH2

## Image



Western blot

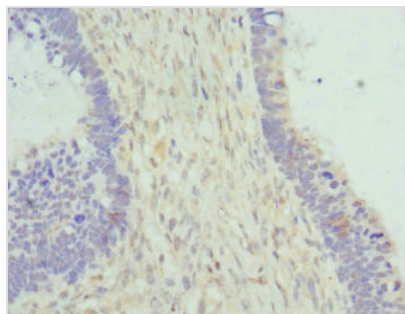
All lanes: CYTH2 antibody at 5.1µg/ml + MCF-7 whole cell lysate

Secondary

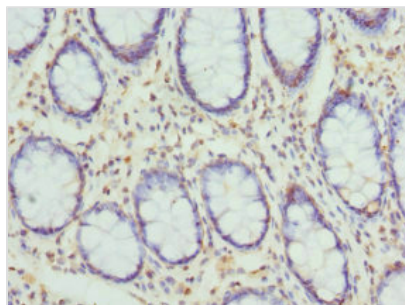
Goat polyclonal to rabbit IgG at 1/10000 dilution

Predicted band size: 47 kDa

Observed band size: 47 kDa



Immunohistochemistry of paraffin-embedded human ovarian cancer using CSB-PA857445ESR2HU at dilution of 1:100



Immunohistochemistry of paraffin-embedded human colon cancer using CSB-PA857445ESR2HU at dilution of 1:100

## Usage

For Research Use Only. Not for use in diagnostic or therapeutic procedures.