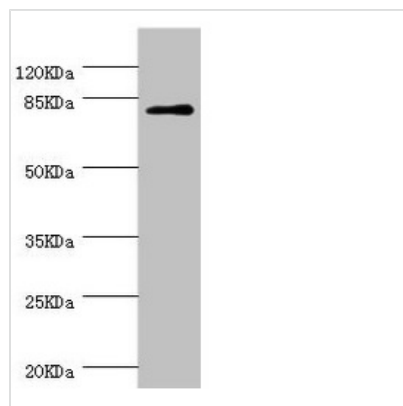




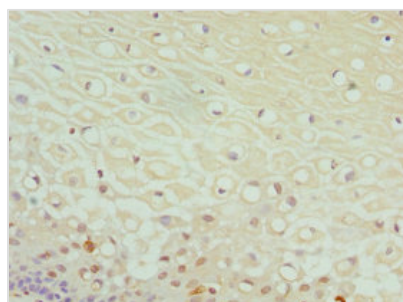
DPP3 Antibody

Product Code	CSB-PA868352ESR2HU
Storage	Upon receipt, store at -20°C or -80°C. Avoid repeated freeze.
Uniprot No.	Q9NY33
Immunogen	Recombinant Human Dipeptidyl peptidase 3 protein (1-280AA)
Raised In	Rabbit
Species Reactivity	Human
Tested Applications	ELISA, WB, IHC; Recommended dilution: WB:1:1000-1:5000, IHC:1:20-1:200
Form	Liquid
Conjugate	Non-conjugated
Storage Buffer	PBS with 0.02% sodium azide, 50% glycerol, pH7.3.
Purification Method	Antigen Affinity Purified
Isotype	IgG
Clonality	Polyclonal
Alias	Dipeptidyl peptidase 3 (EC 3.4.14.4) (Dipeptidyl aminopeptidase III) (Dipeptidyl arylamidase III) (Dipeptidyl peptidase III) (DPP III) (Enkephalinase B), DPP3
Immunogen Species	Homo sapiens (Human)
Research Area	Cell Biology
Target Names	DPP3

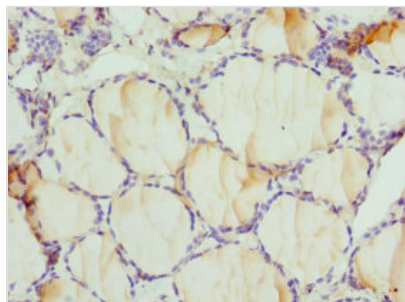
Image



Western blot
 All lanes: DPP3 antibody at 1.39µg/ml + MCF-7 whole cell lysate
 Secondary
 Goat polyclonal to rabbit IgG at 1/10000 dilution
 Predicted band size: 83, 36, 70, 80 kDa
 Observed band size: 83 kDa



Immunohistochemistry of paraffin-embedded human cervical cancer using CSB-PA868352ESR2HU at dilution of 1:100



Immunohistochemistry of paraffin-embedded human thyroid tissue using CSB-PA868352ESR2HU at dilution of 1:100

Usage

For Research Use Only. Not for use in diagnostic or therapeutic procedures.