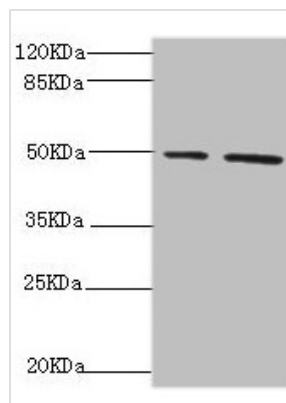




NFS1 Antibody

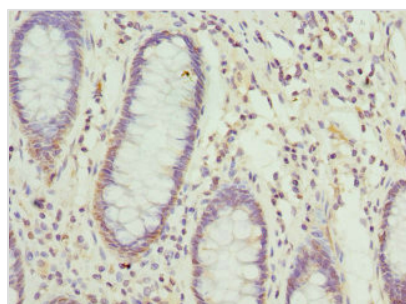
Product Code	CSB-PA896542ESR1HU
Storage	Upon receipt, store at -20°C or -80°C. Avoid repeated freeze.
Uniprot No.	Q9Y697
Immunogen	Recombinant Human Cysteine desulfurase, mitochondrial protein (208-457AA)
Raised In	Rabbit
Species Reactivity	Human
Tested Applications	ELISA, WB, IHC, IP; Recommended dilution: WB:1:1000-1:5000, IHC:1:20-1:200, IP:1:200-1:2000
Form	Liquid
Conjugate	Non-conjugated
Storage Buffer	PBS with 0.02% sodium azide, 50% glycerol, pH7.3.
Purification Method	Antigen Affinity Purified
Isotype	IgG
Clonality	Polyclonal
Alias	Cysteine desulfurase, mitochondrial (EC 2.8.1.7), NFS1, NIFS
Immunogen Species	Homo sapiens (Human)
Research Area	Signal Transduction
Target Names	NFS1

Image

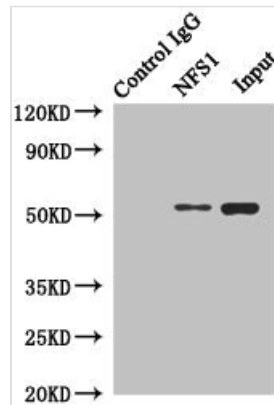


Western blot

All lanes: NFS1 antibody at 6.21µg/ml
 Lane 1: HepG2 whole cell lysate
 Lane 2: Hela whole cell lysate
 Secondary
 Goat polyclonal to rabbit IgG at 1/10000 dilution
 Predicted band size: 51, 45 kDa
 Observed band size: 51 kDa



Immunohistochemistry of paraffin-embedded human colon cancer using CSB-PA896542ESR1HU at dilution of 1:100



Immunoprecipitating NFS1 in HeLa whole cell lysate

Lane 1: Rabbit control IgG instead of (1 μ g) instead of CSB-PA896542ESR1HU in HeLa whole cell lysate. For western blotting, a HRP-conjugated anti-rabbit IgG, specific to the non-reduced form of IgG was used as the Secondary antibody (1/50000)

Lane 2: CSB-PA896542ESR1HU (4 μ g) + HeLa whole cell lysate (500 μ g)

Lane 3: HeLa whole cell lysate (20 μ g)