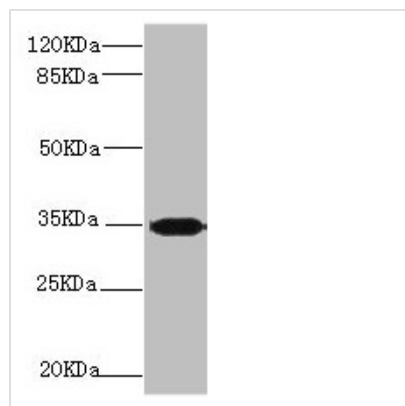




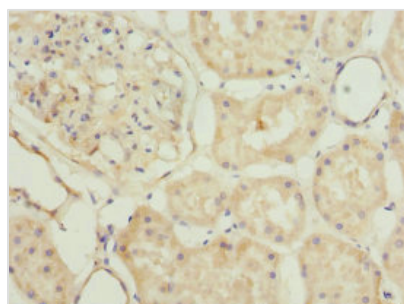
PLSCR1 Antibody

| | |
|----------------------------|--|
| Product Code | CSB-PA018207ESR2HU |
| Storage | Upon receipt, store at -20°C or -80°C. Avoid repeated freeze. |
| Uniprot No. | O15162 |
| Immunogen | Recombinant Human Phospholipid scramblase 1 protein (1-318AA) |
| Raised In | Rabbit |
| Species Reactivity | Human |
| Tested Applications | ELISA, WB, IHC; Recommended dilution: WB:1:1000-1:5000, IHC:1:20-1:200 |
| Form | Liquid |
| Conjugate | Non-conjugated |
| Storage Buffer | PBS with 0.02% sodium azide, 50% glycerol, pH7.3. |
| Purification Method | Antigen Affinity Purified |
| Isotype | IgG |
| Clonality | Polyclonal |
| Alias | Phospholipid scramblase 1 (PL scramblase 1) (Ca(2+)-dependent phospholipid scramblase 1) (Erythrocyte phospholipid scramblase) (MmTRA1b), PLSCR1 |
| Immunogen Species | Homo sapiens (Human) |
| Research Area | Microbiology |
| Target Names | PLSCR1 |

Image



Western blot
 All lanes: PLSCR1 antibody at 2.24µg/ml + 293T whole cell lysate
 Secondary
 Goat polyclonal to rabbit IgG at 1/10000 dilution
 Predicted band size: 36, 27 kDa
 Observed band size: 36 kDa



Immunohistochemistry of paraffin-embedded human kidney tissue using CSB-PA018207ESR2HU at dilution of 1:100



Usage

For Research Use Only. Not for use in diagnostic or therapeutic procedures.