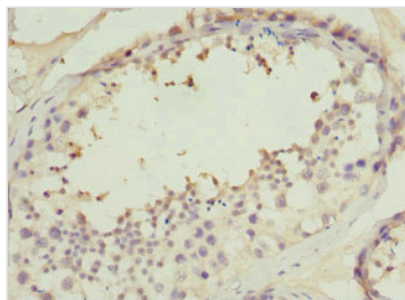




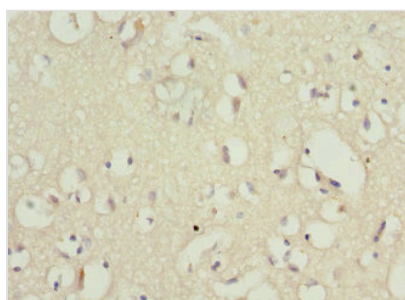
PPP2R1B Antibody

Product Code	CSB-PA830420ESR2HU
Storage	Upon receipt, store at -20°C or -80°C. Avoid repeated freeze.
Uniprot No.	P30154
Immunogen	Recombinant Human Serine/threonine-protein phosphatase 2A 65 kDa regulatory subunit A beta isoform protein (402-601AA)
Raised In	Rabbit
Species Reactivity	Human
Tested Applications	ELISA, IHC; Recommended dilution: IHC:1:100-1:500
Form	Liquid
Conjugate	Non-conjugated
Storage Buffer	PBS with 0.02% sodium azide, 50% glycerol, pH7.3.
Purification Method	Antigen Affinity Purified
Isotype	IgG
Clonality	Polyclonal
Alias	Serine/threonine-protein phosphatase 2A 65 kDa regulatory subunit A beta isoform (PP2A subunit A isoform PR65-beta) (PP2A subunit A isoform R1-beta), PPP2R1B
Immunogen Species	Homo sapiens (Human)
Research Area	Signal Transduction
Target Names	PPP2R1B

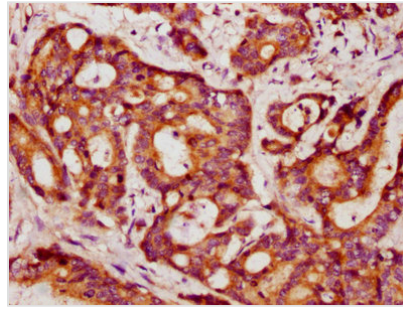
Image



Immunohistochemistry of paraffin-embedded human testis tissue using CSB-PA830420ESR2HU at dilution of 1:100



Immunohistochemistry of paraffin-embedded human brain tissue using CSB-PA830420ESR2HU at dilution of 1:100



IHC image of CSB-PA830420ESR2HU diluted at 1:403 and staining in paraffin-embedded human colon cancer performed on a Leica Bond™ system. After dewaxing and hydration, antigen retrieval was mediated by high pressure in a citrate buffer (pH 6.0). Section was blocked with 10% normal goat serum 30min at RT. Then primary antibody (1% BSA) was incubated at 4°C overnight. The primary is detected by a biotinylated secondary antibody and visualized using an HRP conjugated SP system.

Usage

For Research Use Only. Not for use in diagnostic or therapeutic procedures.