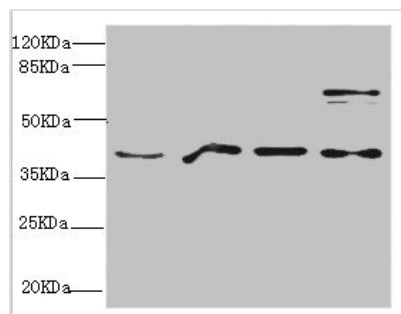




RAE1 Antibody

Product Code	CSB-PA019276ESR1HU
Storage	Upon receipt, store at -20°C or -80°C. Avoid repeated freeze.
Uniprot No.	P78406
Immunogen	Recombinant Human mRNA export factor protein (1-368AA)
Raised In	Rabbit
Species Reactivity	Human, Mouse
Tested Applications	ELISA, WB, IHC; Recommended dilution: WB:1:1000-1:5000, IHC:1:20-1:200
Form	Liquid
Conjugate	Non-conjugated
Storage Buffer	PBS with 0.02% sodium azide, 50% glycerol, pH7.3.
Purification Method	Antigen Affinity Purified
Isotype	IgG
Clonality	Polyclonal
Alias	mRNA export factor (Rae1 protein homolog) (mRNA-associated protein mrnp 41), RAE1, MRNP41
Immunogen Species	Homo sapiens (Human)
Research Area	Cell Biology
Target Names	RAE1

Image



Western blot

All lanes: RAE1 antibody at 4.39µg/ml

Lane 1: Mouse brain tissue

Lane 2: HepG2 whole cell lysate

Lane 3: 293T whole cell lysate

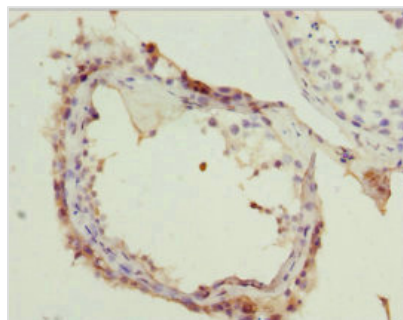
Lane 4: HeLa whole cell lysate

Secondary

Goat polyclonal to rabbit IgG at 1/10000 dilution

Predicted band size: 41 kDa

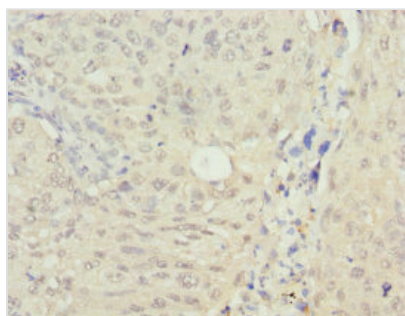
Observed band size: 41, 80 kDa



Immunohistochemistry of paraffin-embedded

human testis tissue using CSB-

PA019276ESR1HU at dilution of 1: 100



Immunohistochemistry of paraffin-embedded human lung cancer using CSB-PA019276ESR1HU at dilution of 1: 100

Usage

For Research Use Only. Not for use in diagnostic or therapeutic procedures.