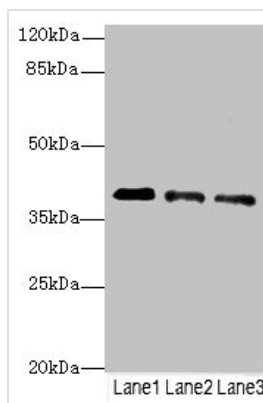




RP2 Antibody

Product Code	CSB-PA020076ESR1HU
Storage	Upon receipt, store at -20°C or -80°C. Avoid repeated freeze.
Uniprot No.	O75695
Immunogen	Recombinant Human Protein XRP2 protein (1-350AA)
Raised In	Rabbit
Species Reactivity	Human
Tested Applications	ELISA, WB, IHC, IP; Recommended dilution: WB:1:1000-1:5000, IHC:1:20-1:200, IP:1:200-1:2000
Form	Liquid
Conjugate	Non-conjugated
Storage Buffer	PBS with 0.02% sodium azide, 50% glycerol, pH7.3.
Purification Method	Antigen Affinity Purified
Isotype	IgG
Clonality	Polyclonal
Alias	Protein XRP2, RP2
Immunogen Species	Homo sapiens (Human)
Research Area	Neuroscience
Target Names	RP2

Image



Western blot

All lanes: RP2antibody at 3.81μg/ml

Lane 1: Jurkat whole cell lysate

Lane 2: HepG2 whole cell lysate

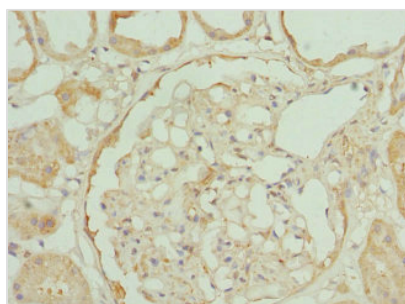
Lane 3: Hela whole cell lysate

Secondary

Goat polyclonal to rabbit IgG at 1/10000 dilution

Predicted band size: 40 kDa

Observed band size: 40 kDa



Immunohistochemistry of paraffin-embedded

human kidney tissue using CSB-

PA020076ESR1HU at dilution of 1:100



Usage

For Research Use Only. Not for use in diagnostic or therapeutic procedures.