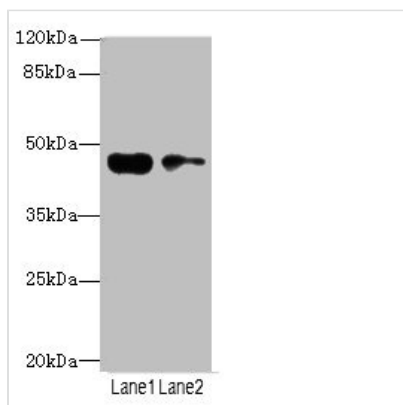




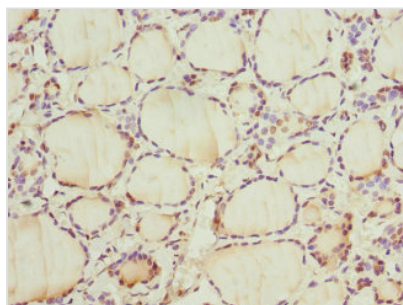
CCNE2 Antibody

Product Code	CSB-PA004818ESR1HU
Storage	Upon receipt, store at -20°C or -80°C. Avoid repeated freeze.
Uniprot No.	O96020
Immunogen	Recombinant Human G1/S-specific cyclin-E2 protein (255-404AA)
Raised In	Rabbit
Species Reactivity	Human
Tested Applications	ELISA, WB, IHC; Recommended dilution: WB:1:1000-1:5000, IHC:1:20-1:200
Form	Liquid
Conjugate	Non-conjugated
Storage Buffer	PBS with 0.02% sodium azide, 50% glycerol, pH7.3.
Purification Method	Antigen Affinity Purified
Isotype	IgG
Clonality	Polyclonal
Alias	G1/S-specific cyclin-E2, CCNE2
Immunogen Species	Homo sapiens (Human)
Research Area	Cell Biology
Target Names	CCNE2

Image



Western blot
 All lanes: CCNE2 antibody at 3.25µg/ml
 Lane 1: Jurkat whole cell lysate
 Lane 2: Hela whole cell lysate
 Secondary
 Goat polyclonal to rabbit IgG at 1/10000 dilution
 Predicted band size: 47, 42 kDa
 Observed band size: 47 kDa



Immunohistochemistry of paraffin-embedded human thyroid tissue using CSB-PA004818ESR1HU at dilution of 1:100



Usage

For Research Use Only. Not for use in diagnostic or therapeutic procedures.