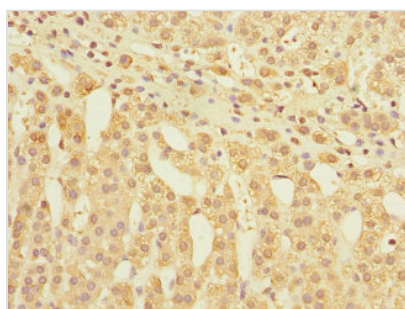




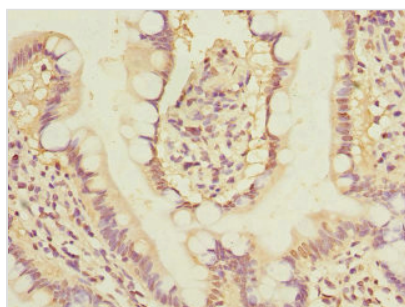
GLP2R Antibody

Product Code	CSB-PA009515ESR2HU
Storage	Upon receipt, store at -20°C or -80°C. Avoid repeated freeze.
Uniprot No.	O95838
Immunogen	Recombinant Human Glucagon-like peptide 2 receptor protein (1-180AA)
Raised In	Rabbit
Species Reactivity	Human
Tested Applications	ELISA, IHC; Recommended dilution: IHC:1:20-1:200
Form	Liquid
Conjugate	Non-conjugated
Storage Buffer	PBS with 0.02% sodium azide, 50% glycerol, pH7.3.
Purification Method	Antigen Affinity Purified
Isotype	IgG
Clonality	Polyclonal
Alias	Glucagon-like peptide 2 receptor (GLP-2 receptor) (GLP-2-R) (GLP-2R), GLP2R
Immunogen Species	Homo sapiens (Human)
Research Area	Signal Transduction
Target Names	GLP2R

Image



Immunohistochemistry of paraffin-embedded human adrenal gland tissue using CSB-PA009515ESR2HU at dilution of 1:100



Immunohistochemistry of paraffin-embedded human small intestine tissue using CSB-PA009515ESR2HU at dilution of 1:100

Usage

For Research Use Only. Not for use in diagnostic or therapeutic procedures.