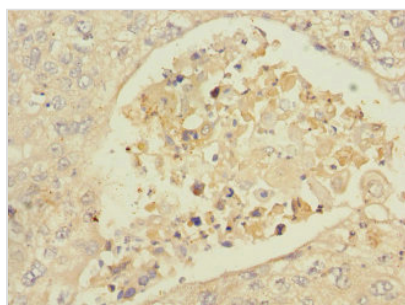




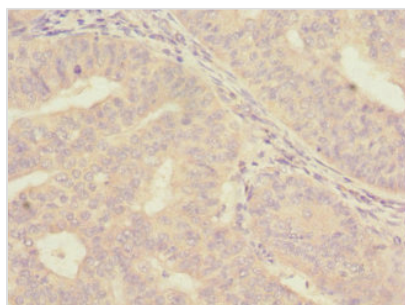
ISCU Antibody

Product Code	CSB-PA887955ESR2HU
Storage	Upon receipt, store at -20°C or -80°C. Avoid repeated freeze.
Uniprot No.	Q9H1K1
Immunogen	Recombinant Human Iron-sulfur cluster assembly enzyme ISCU, mitochondrial protein (1-167AA)
Raised In	Rabbit
Species Reactivity	Human
Tested Applications	ELISA, IHC; Recommended dilution: IHC:1:20-1:200
Form	Liquid
Conjugate	Non-conjugated
Storage Buffer	PBS with 0.02% sodium azide, 50% glycerol, pH7.3.
Purification Method	Antigen Affinity Purified
Isotype	IgG
Clonality	Polyclonal
Alias	Iron-sulfur cluster assembly enzyme ISCU, mitochondrial (NifU-like N-terminal domain-containing protein) (NifU-like protein), ISCU, NIFUN
Immunogen Species	Homo sapiens (Human)
Research Area	Signal Transduction
Target Names	ISCU

Image



Immunohistochemistry of paraffin-embedded human lung cancer using CSB-PA887955ESR2HU at dilution of 1:100



Immunohistochemistry of paraffin-embedded human endometrial cancer using CSB-PA887955ESR2HU at dilution of 1:100



Usage

For Research Use Only. Not for use in diagnostic or therapeutic procedures.