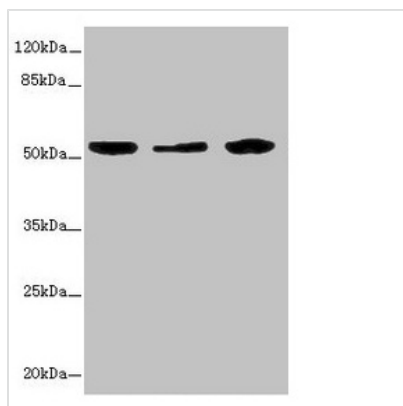




KYNU Antibody

Product Code	CSB-PA621970ESR1HU
Storage	Upon receipt, store at -20°C or -80°C. Avoid repeated freeze.
Uniprot No.	Q16719
Immunogen	Recombinant Human Kynureninase protein (1-307AA)
Raised In	Rabbit
Species Reactivity	Human
Tested Applications	ELISA, WB, IHC, IP; Recommended dilution: WB:1:1000-1:5000, IHC:1:20-1:200, IP:1:200-1:2000
Form	Liquid
Conjugate	Non-conjugated
Storage Buffer	PBS with 0.02% sodium azide, 50% glycerol, pH7.3.
Purification Method	Antigen Affinity Purified
Isotype	IgG
Clonality	Polyclonal
Alias	Kynureninase (EC 3.7.1.3) (L-kynurenine hydrolase), KYNU
Immunogen Species	Homo sapiens (Human)
Research Area	Signal Transduction
Target Names	KYNU

Image



Western blot

All lanes: KYNU antibody at 3.26µg/ml

Lane 1: A549 whole cell lysate

Lane 2: HepG2 whole cell lysate

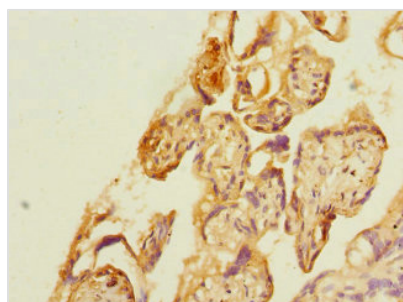
Lane 3: THP-1 whole cell lysate

Secondary

Goat polyclonal to rabbit IgG at 1/10000 dilution

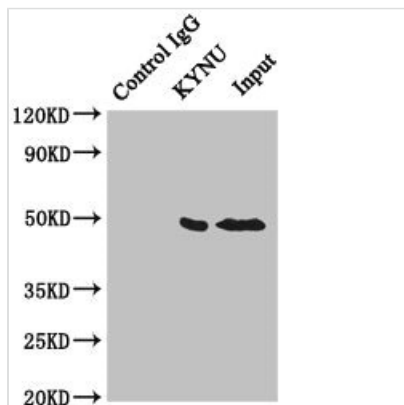
Predicted band size: 53, 35 kDa

Observed band size: 53 kDa



Immunohistochemistry of paraffin-embedded

human placenta tissue using CSB-PA621970ESR1HU at dilution of 1:100



Immunoprecipitating KYNU in HeLa whole cell lysate

Lane 1: Rabbit control IgG instead of (1 μ g) instead of CSB-PA621970ESR1HU in HeLa whole cell lysate. For western blotting, a HRP-conjugated anti-rabbit IgG, specific to the non-reduced form of IgG was used as the Secondary antibody (1/50000)

Lane 2: CSB-PA621970ESR1HU (4 μ g) + HeLa whole cell lysate (500 μ g)

Lane 3: HeLa whole cell lysate (20 μ g)

Usage

For Research Use Only. Not for use in diagnostic or therapeutic procedures.