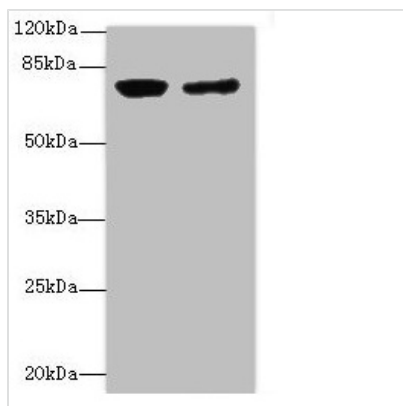




LSS Antibody

Product Code	CSB-PA013216ESR2HU
Storage	Upon receipt, store at -20°C or -80°C. Avoid repeated freeze.
Uniprot No.	P48449
Immunogen	Recombinant Human Lanosterol synthase protein (1-300AA)
Raised In	Rabbit
Species Reactivity	Human
Tested Applications	ELISA, WB, IHC; Recommended dilution: WB:1:1000-1:5000, IHC:1:20-1:200
Form	Liquid
Conjugate	Non-conjugated
Storage Buffer	PBS with 0.02% sodium azide, 50% glycerol, pH7.3.
Purification Method	Antigen Affinity Purified
Isotype	IgG
Clonality	Polyclonal
Alias	Lanosterol synthase (EC 5.4.99.7) (2,3-epoxysqualene--lanosterol cyclase) (Oxidosqualene--lanosterol cyclase) (OSC) (hOSC), LSS, OSC
Immunogen Species	Homo sapiens (Human)
Research Area	Cardiovascular
Target Names	LSS

Image



Western blot

All lanes: LSS antibody at 0.76µg/ml

Lane 1: PC-3 whole cell lysate

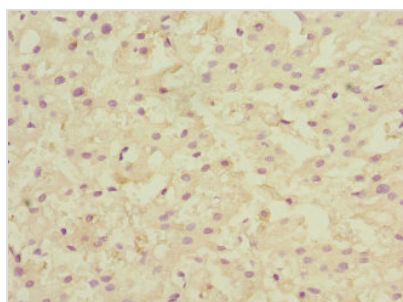
Lane 2: Hela whole cell lysate

Secondary

Goat polyclonal to Rabbit IgG at 1/10000 dilution

Predicted band size: 84, 75, 83 kDa

Observed band size: 83 kDa



Immunohistochemistry of paraffin-embedded

human liver cancer using CSB-PA013216ESR2HU at dilution of 1:100



Usage

For Research Use Only. Not for use in diagnostic or therapeutic procedures.