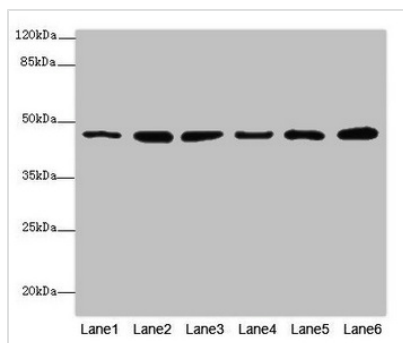




# MPI Antibody

<b>Product Code</b>	CSB-PA014754ESR1HU
<b>Storage</b>	Upon receipt, store at -20°C or -80°C. Avoid repeated freeze.
<b>Uniprot No.</b>	P34949
<b>Immunogen</b>	Recombinant Human Mannose-6-phosphate isomerase protein (1-423AA)
<b>Raised In</b>	Rabbit
<b>Species Reactivity</b>	Human, Mouse
<b>Tested Applications</b>	ELISA, WB, IHC; Recommended dilution: WB:1:1000-1:5000, IHC:1:20-1:200
<b>Form</b>	Liquid
<b>Conjugate</b>	Non-conjugated
<b>Storage Buffer</b>	PBS with 0.02% sodium azide, 50% glycerol, pH7.3.
<b>Purification Method</b>	Antigen Affinity Purified
<b>Isotype</b>	IgG
<b>Clonality</b>	Polyclonal
<b>Alias</b>	Mannose-6-phosphate isomerase (EC 5.3.1.8) (Phosphohexomutase) (Phosphomannose isomerase) (PMI), MPI, PMI1
<b>Immunogen Species</b>	Homo sapiens (Human)
<b>Research Area</b>	Signal Transduction
<b>Target Names</b>	MPI

## Image



### Western blot

All lanes: MPI antibody at 5.12µg/ml

Lane 1: Mouse heart tissue

Lane 2: Mouse kidney tissue

Lane 3: Mouse brain tissue

Lane 4: HepG2 whole cell lysate

Lane 5: 293T whole cell lysate

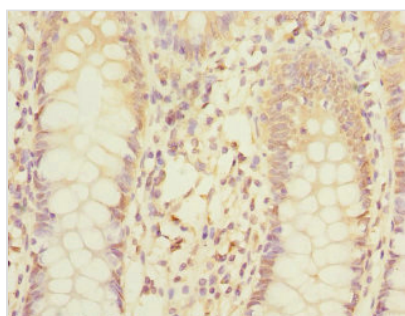
Lane 6: A549 whole cell lysate

Secondary

Goat polyclonal to rabbit IgG at 1/10000 dilution

Predicted band size: 47, 40 kDa

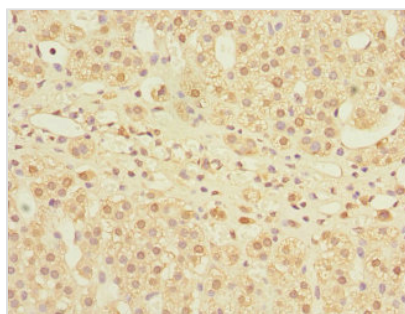
Observed band size: 47 kDa



Immunohistochemistry of paraffin-embedded

human colon cancer using CSB-

PA014754ESR1HU at dilution of 1:100



Immunohistochemistry of paraffin-embedded human adrenal gland tissue using CSB-PA014754ESR1HU at dilution of 1:100

---

**Usage**

For Research Use Only. Not for use in diagnostic or therapeutic procedures.