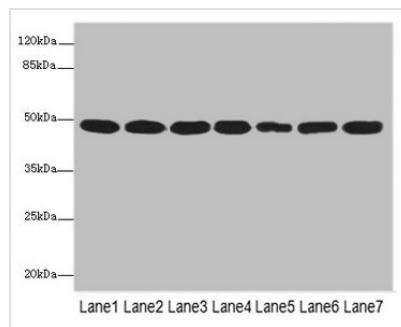




COPS3 Antibody

Product Code	CSB-PA892483ESR1HU
Storage	Upon receipt, store at -20°C or -80°C. Avoid repeated freeze.
Uniprot No.	Q9UNS2
Immunogen	Recombinant Human COP9 signalosome complex subunit 3 protein (194-423AA)
Raised In	Rabbit
Species Reactivity	Human, Mouse
Tested Applications	ELISA, WB, IHC, IP; Recommended dilution: WB:1:1000-1:5000, IHC:1:20-1:200, IP:1:200-1:2000
Form	Liquid
Conjugate	Non-conjugated
Storage Buffer	PBS with 0.02% sodium azide, 50% glycerol, pH7.3.
Purification Method	Antigen Affinity Purified
Isotype	IgG
Clonality	Polyclonal
Alias	COP9 signalosome complex subunit 3 (SGN3) (Signalosome subunit 3) (JAB1-containing signalosome subunit 3), COPS3, CSN3
Immunogen Species	Homo sapiens (Human)
Research Area	Neuroscience
Target Names	COPS3

Image



Western blot

All lanes: COPS3 antibody at 3.41 µg/ml

Lane 1: MCF-7 whole cell lysate

Lane 2: Hela whole cell lysate

Lane 3: 293T whole cell lysate

Lane 4: HT29 whole cell lysate

Lane 5: Mouse heart tissue

Lane 6: Mouse brain tissue

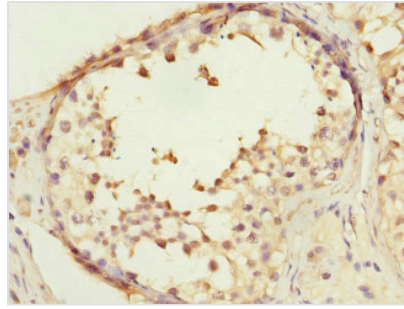
Lane 7: Mouse ovarian tissue

Secondary

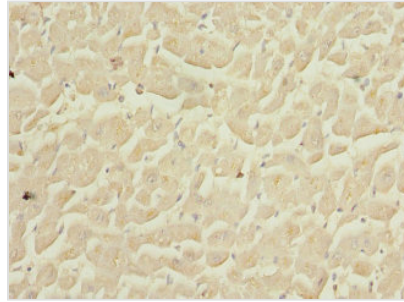
Goat polyclonal to rabbit IgG at 1/10000 dilution

Predicted band size: 48, 46 kDa

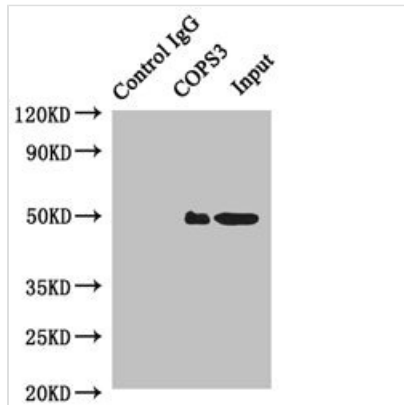
Observed band size: 48 kDa



Immunohistochemistry of paraffin-embedded human testis tissue using CSB-PA892483ESR1HU at dilution of 1:100



Immunohistochemistry of paraffin-embedded human heart tissue using CSB-PA892483ESR1HU at dilution of 1:100



Immunoprecipitating COPS3 in HeLa whole cell lysate

Lane 1: Rabbit control IgG instead of (1µg) instead of CSB-PA892483ESR1HU in HeLa whole cell lysate. For western blotting, a HRP-conjugated anti-rabbit IgG, specific to the non-reduced form of IgG was used as the Secondary antibody (1/50000)

Lane 2: CSB-PA892483ESR1HU (4µg) + HeLa whole cell lysate (500µg)

Lane 3: HeLa whole cell lysate (20µg)

Usage

For Research Use Only. Not for use in diagnostic or therapeutic procedures.