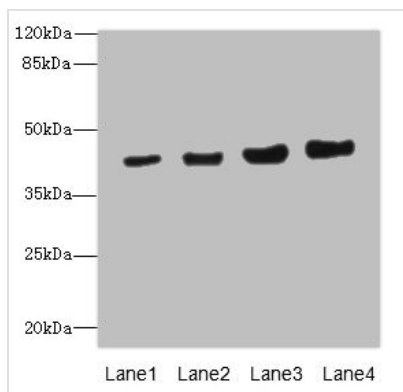




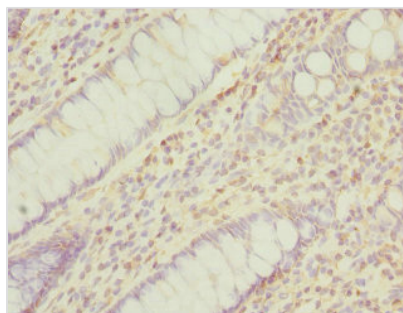
PPM1A Antibody

Product Code	CSB-PA018489DSR1HU
Storage	Upon receipt, store at -20°C or -80°C. Avoid repeated freeze.
Uniprot No.	P35813
Immunogen	Recombinant Human Protein phosphatase 1A protein (1-382AA)
Raised In	Rabbit
Species Reactivity	Human, Mouse
Tested Applications	ELISA, WB, IHC; Recommended dilution: WB:1:1000-1:5000, IHC:1:20-1:200
Form	Liquid
Conjugate	Non-conjugated
Storage Buffer	PBS with 0.02% sodium azide, 50% glycerol, pH7.3.
Purification Method	Antigen Affinity Purified
Isotype	IgG
Clonality	Polyclonal
Alias	Protein phosphatase 1A (EC 3.1.3.16) (Protein phosphatase 2C isoform alpha) (PP2C-alpha) (Protein phosphatase IA), PPM1A, PPPM1A
Immunogen Species	Homo sapiens (Human)
Research Area	Signal Transduction
Target Names	PPM1A

Image



Western blot
 All lanes: PPM1A antibody at 6.88µg/ml
 Lane 1: HepG2 whole cell lysate
 Lane 2: SH-SY5Y whole cell lysate
 Lane 3: Mouse liver tissue
 Lane 4: Mouse brain tissue
 Secondary
 Goat polyclonal to rabbit IgG at 1/10000 dilution
 Predicted band size: 43, 36, 52 kDa
 Observed band size: 43 kDa



Immunohistochemistry of paraffin-embedded human colon cancer using CSB-PA018489DSR1HU at dilution of 1:100



Usage

For Research Use Only. Not for use in diagnostic or therapeutic procedures.