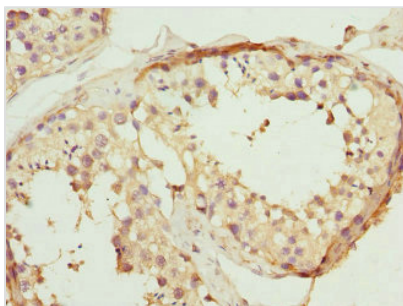




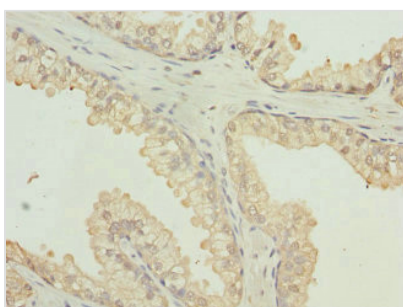
# PTPRB Antibody

<b>Product Code</b>	CSB-PA019048ESR2HU
<b>Storage</b>	Upon receipt, store at -20°C or -80°C. Avoid repeated freeze.
<b>Uniprot No.</b>	P23467
<b>Immunogen</b>	Recombinant Human Receptor-type tyrosine-protein phosphatase beta protein (1758-1997AA)
<b>Raised In</b>	Rabbit
<b>Species Reactivity</b>	Human
<b>Tested Applications</b>	ELISA, IHC; Recommended dilution: IHC:1:20-1:200
<b>Form</b>	Liquid
<b>Conjugate</b>	Non-conjugated
<b>Storage Buffer</b>	PBS with 0.02% sodium azide, 50% glycerol, pH7.3.
<b>Purification Method</b>	Antigen Affinity Purified
<b>Isotype</b>	IgG
<b>Clonality</b>	Polyclonal
<b>Alias</b>	Receptor-type tyrosine-protein phosphatase beta (Protein-tyrosine phosphatase beta) (R-PTP-beta) (EC 3.1.3.48) (Vascular endothelial protein tyrosine phosphatase) (VE-PTP), PTPRB, PTPB
<b>Immunogen Species</b>	Homo sapiens (Human)
<b>Research Area</b>	Others
<b>Target Names</b>	PTPRB

## Image



Immunohistochemistry of paraffin-embedded human testis tissue using CSB-PA019048ESR2HU at dilution of 1:100



Immunohistochemistry of paraffin-embedded human prostate cancer using CSB-PA019048ESR2HU at dilution of 1:100



---

**Usage**

For Research Use Only. Not for use in diagnostic or therapeutic procedures.