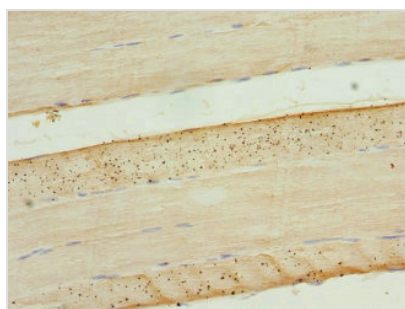




CLK1 Antibody

Product Code	CSB-PA005557ESR1HU
Storage	Upon receipt, store at -20°C or -80°C. Avoid repeated freeze.
Uniprot No.	P49759
Immunogen	Recombinant Human Dual specificity protein kinase CLK1 protein (1-130AA)
Raised In	Rabbit
Species Reactivity	Human
Tested Applications	ELISA, IHC; Recommended dilution: IHC:1:20-1:200
Form	Liquid
Conjugate	Non-conjugated
Storage Buffer	PBS with 0.02% sodium azide, 50% glycerol, pH7.3.
Purification Method	Antigen Affinity Purified
Isotype	IgG
Clonality	Polyclonal
Alias	Dual specificity protein kinase CLK1 (EC 2.7.12.1) (CDC-like kinase 1), CLK1, CLK
Immunogen Species	Homo sapiens (Human)
Research Area	Signal Transduction
Target Names	CLK1

Image



Immunohistochemistry of paraffin-embedded human skeletal muscle tissue using CSB-PA005557ESR1HU at dilution of 1:100

Usage

For Research Use Only. Not for use in diagnostic or therapeutic procedures.