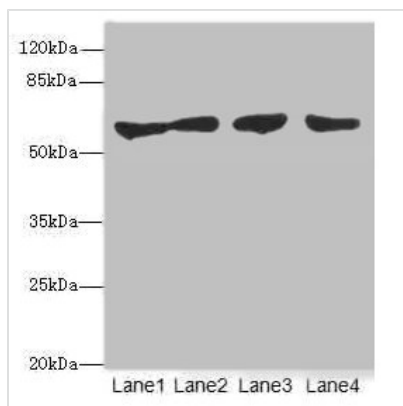




CLK1 Antibody

| | |
|----------------------------|---|
| Product Code | CSB-PA005557ESR2HU |
| Storage | Upon receipt, store at -20°C or -80°C. Avoid repeated freeze. |
| Uniprot No. | P49759 |
| Immunogen | Recombinant Human Dual specificity protein kinase CLK1 protein (1-130AA) |
| Raised In | Rabbit |
| Species Reactivity | Human |
| Tested Applications | ELISA, WB, IHC; Recommended dilution: WB:1:1000-1:5000, IHC:1:20-1:200 |
| Form | Liquid |
| Conjugate | Non-conjugated |
| Storage Buffer | PBS with 0.02% sodium azide, 50% glycerol, pH7.3. |
| Purification Method | Antigen Affinity Purified |
| Isotype | IgG |
| Clonality | Polyclonal |
| Alias | Dual specificity protein kinase CLK1 (EC 2.7.12.1) (CDC-like kinase 1), CLK1, CLK |
| Immunogen Species | Homo sapiens (Human) |
| Research Area | Signal Transduction |
| Target Names | CLK1 |

Image



Western blot

All lanes: CLK1 antibody at 3.07 μg/ml

Lane 1: HepG2 whole cell lysate

Lane 2: Jurkat whole cell lysate

Lane 3: U251 whole cell lysate

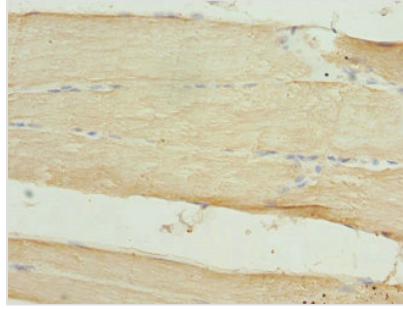
Lane 4: A549 whole cell lysate

Secondary

Goat polyclonal to rabbit IgG at 1/10000 dilution

Predicted band size: 58, 17, 62 kDa

Observed band size: 58 kDa



Immunohistochemistry of paraffin-embedded human skeletal muscle tissue using CSB-PA005557ESR2HU at dilution of 1:100

Usage

For Research Use Only. Not for use in diagnostic or therapeutic procedures.