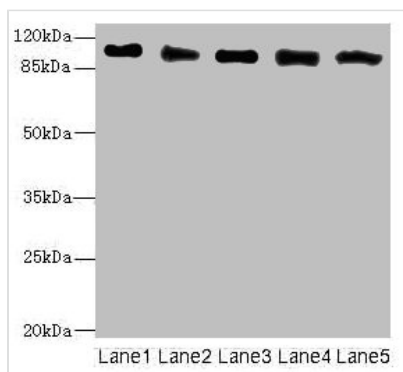




COPB2 Antibody

Product Code	CSB-PA529993ESR1HU
Storage	Upon receipt, store at -20°C or -80°C. Avoid repeated freeze.
Uniprot No.	P35606
Immunogen	Recombinant Human Coatomer subunit beta' protein (657-906AA)
Raised In	Rabbit
Species Reactivity	Human
Tested Applications	ELISA, WB, IHC; Recommended dilution: WB:1:1000-1:5000, IHC:1:20-1:200
Form	Liquid
Conjugate	Non-conjugated
Storage Buffer	PBS with 0.02% sodium azide, 50% glycerol, pH7.3.
Purification Method	Antigen Affinity Purified
Isotype	IgG
Clonality	Polyclonal
Alias	Coatomer subunit beta' (Beta'-coat protein) (Beta'-COP) (p102), COPB2
Immunogen Species	Homo sapiens (Human)
Research Area	Others
Target Names	COPB2

Image



Western blot

All lanes: COPB2 antibody at 2.51µg/ml

Lane 1: Human placenta tissue

Lane 2: MCF-7 whole cell lysate

Lane 3: Hela whole cell lysate

Lane 4: HepG2 whole cell lysate

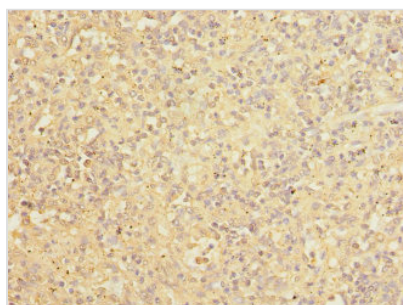
Lane 5: Jurkat whole cell lysate

Secondary

Goat polyclonal to rabbit IgG at 1/10000 dilution

Predicted band size: 103, 100 kDa

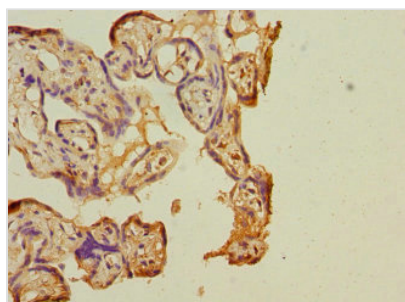
Observed band size: 103 kDa



Immunohistochemistry of paraffin-embedded

human spleen tissue using CSB-

PA529993ESR1HU at dilution of 1:100



Immunohistochemistry of paraffin-embedded human placenta tissue using CSB-PA529993ESR1HU at dilution of 1:100

Usage

For Research Use Only. Not for use in diagnostic or therapeutic procedures.