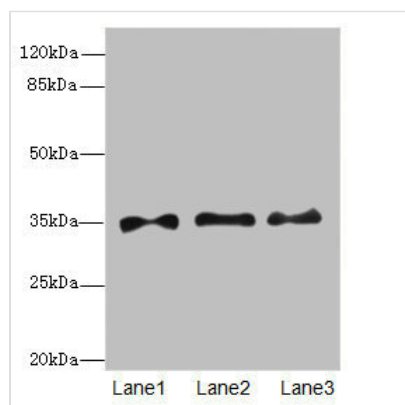




# PRPS1 Antibody

<b>Product Code</b>	CSB-PA018776ESR1HU
<b>Storage</b>	Upon receipt, store at -20°C or -80°C. Avoid repeated freeze.
<b>Uniprot No.</b>	P60891
<b>Immunogen</b>	Recombinant Human Ribose-phosphate pyrophosphokinase 1 protein (1-318AA)
<b>Raised In</b>	Rabbit
<b>Species Reactivity</b>	Human
<b>Tested Applications</b>	ELISA, WB, IHC; Recommended dilution: WB:1:1000-1:5000, IHC:1:20-1:200
<b>Form</b>	Liquid
<b>Conjugate</b>	Non-conjugated
<b>Storage Buffer</b>	PBS with 0.02% sodium azide, 50% glycerol, pH7.3.
<b>Purification Method</b>	Antigen Affinity Purified
<b>Isotype</b>	IgG
<b>Clonality</b>	Polyclonal
<b>Alias</b>	Ribose-phosphate pyrophosphokinase 1 (EC 2.7.6.1) (PPRibP) (Phosphoribosyl pyrophosphate synthase I) (PRS-I), PRPS1
<b>Immunogen Species</b>	Homo sapiens (Human)
<b>Research Area</b>	Others
<b>Target Names</b>	PRPS1

## Image



### Western blot

All lanes: PRPS1 antibody at 6.28μg/ml

Lane 1: HepG2 whole cell lysate

Lane 2: Jurkat whole cell lysate

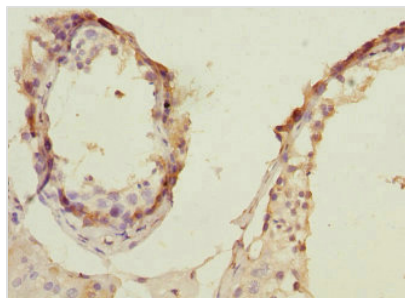
Lane 3: 293T whole cell lysate

### Secondary

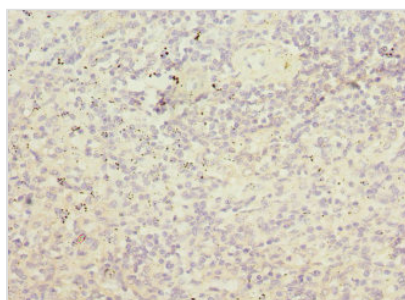
Goat polyclonal to rabbit IgG at 1/10000 dilution

Predicted band size: 35, 28 kDa

Observed band size: 35 kDa



Immunohistochemistry of paraffin-embedded human testis tissue using CSB-PA018776ESR1HU at dilution of 1:100



Immunohistochemistry of paraffin-embedded human spleen tissue using CSB-PA018776ESR1HU at dilution of 1:100