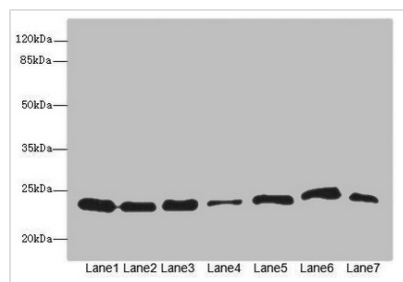




PSMB3 Antibody

Product Code	CSB-PA018880ESR1HU
Storage	Upon receipt, store at -20°C or -80°C. Avoid repeated freeze.
Uniprot No.	P49720
Immunogen	Recombinant Human Proteasome subunit beta type-3 protein (1-205AA)
Raised In	Rabbit
Species Reactivity	Human, Mouse
Tested Applications	ELISA, WB, IHC; Recommended dilution: WB:1:1000-1:5000, IHC:1:20-1:200
Form	Liquid
Conjugate	Non-conjugated
Storage Buffer	PBS with 0.02% sodium azide, 50% glycerol, pH7.3.
Purification Method	Antigen Affinity Purified
Isotype	IgG
Clonality	Polyclonal
Alias	Proteasome subunit beta type-3 (EC 3.4.25.1) (Proteasome chain 13) (Proteasome component C10-II) (Proteasome theta chain), PSMB3
Immunogen Species	Homo sapiens (Human)
Research Area	Others
Target Names	PSMB3

Image



Western blot

All lanes: PSMB3 antibody at 3.73µg/ml

Lane 1: HeLa whole cell lysate

Lane 2: MCF-7 whole cell lysate

Lane 3: HepG2 whole cell lysate

Lane 4: K562 whole cell lysate

Lane 5: Jurkat whole cell lysate

Lane 6: NIH/3T3 whole cell lysate

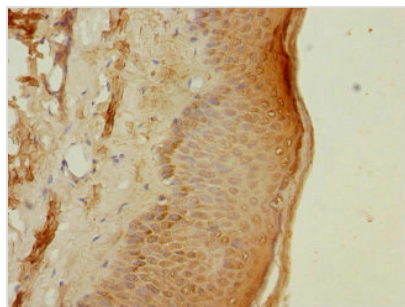
Lane 7: 293T whole cell lysate

Secondary

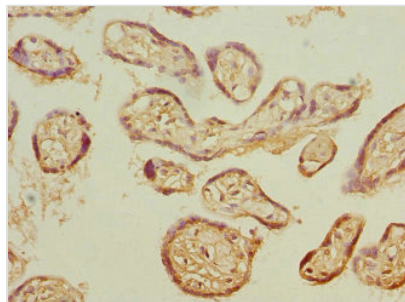
Goat polyclonal to rabbit IgG at 1/10000 dilution

Predicted band size: 23 kDa

Observed band size: 23 kDa



Immunohistochemistry of paraffin-embedded human skin tissue using CSB-PA018880ESR1HU at dilution of 1:100



Immunohistochemistry of paraffin-embedded human placenta tissue using CSB-PA018880ESR1HU at dilution of 1:100

Usage

For Research Use Only. Not for use in diagnostic or therapeutic procedures.