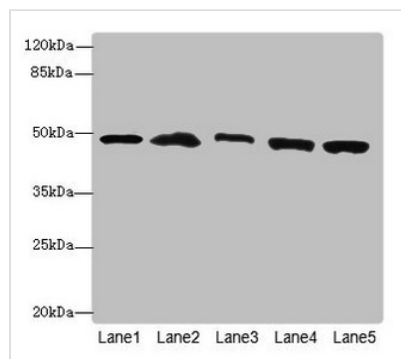




PSMD13 Antibody

Product Code	CSB-PA890768ESR1HU
Storage	Upon receipt, store at -20°C or -80°C. Avoid repeated freeze.
Uniprot No.	Q9UNM6
Immunogen	Recombinant Human 26S proteasome non-ATPase regulatory subunit 13 protein (1-250AA)
Raised In	Rabbit
Species Reactivity	Human, Mouse
Tested Applications	ELISA, WB, IHC; Recommended dilution: WB:1:1000-1:5000, IHC:1:20-1:200
Form	Liquid
Conjugate	Non-conjugated
Storage Buffer	PBS with 0.02% sodium azide, 50% glycerol, pH7.3.
Purification Method	Antigen Affinity Purified
Isotype	IgG
Clonality	Polyclonal
Alias	26S proteasome non-ATPase regulatory subunit 13 (26S proteasome regulatory subunit RPN9) (26S proteasome regulatory subunit S11) (26S proteasome regulatory subunit p40.5), PSMD13
Immunogen Species	Homo sapiens (Human)
Research Area	Cell Biology
Target Names	PSMD13

Image



Western blot

All lanes: PSMD13antibody at 3.42µg/ml

Lane 1: Mouse lung tissue

Lane 2: 293T whole cell lysate

Lane 3: Hela whole cell lysate

Lane 4: HepG2 whole cell lysate

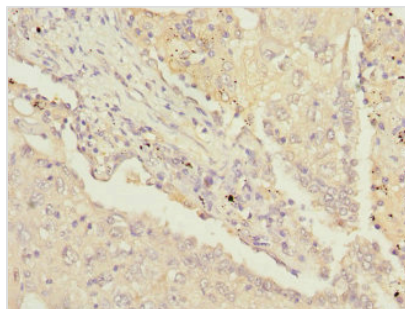
Lane 5: Jurkat whole cell lysate

Secondary

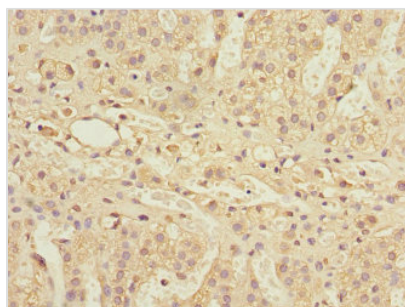
Goat polyclonal to rabbit IgG at 1/10000 dilution

Predicted band size: 43 kDa

Observed band size: 43 kDa



Immunohistochemistry of paraffin-embedded human lung cancer using CSB-PA890768ESR1HU at dilution of 1:100



Immunohistochemistry of paraffin-embedded human adrenal gland tissue using CSB-PA890768ESR1HU at dilution of 1:100

Usage

For Research Use Only. Not for use in diagnostic or therapeutic procedures.