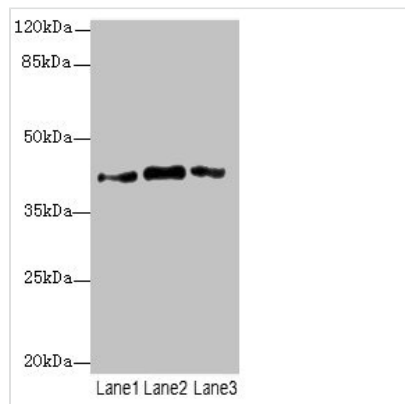




PTGES2 Antibody

Product Code	CSB-PA018977ESR1HU
Storage	Upon receipt, store at -20°C or -80°C. Avoid repeated freeze.
Uniprot No.	Q9H7Z7
Immunogen	Recombinant Human Prostaglandin E synthase 2 protein (88-377AA)
Raised In	Rabbit
Species Reactivity	Human
Tested Applications	ELISA, WB, IHC; Recommended dilution: WB:1:1000-1:5000, IHC:1:20-1:200
Form	Liquid
Conjugate	Non-conjugated
Storage Buffer	PBS with 0.02% sodium azide, 50% glycerol, pH7.3.
Purification Method	Antigen Affinity Purified
Isotype	IgG
Clonality	Polyclonal
Alias	Prostaglandin E synthase 2 (Membrane-associated prostaglandin E synthase-2) (mPGE synthase-2) (Microsomal prostaglandin E synthase 2) (mPGES-2) (Prostaglandin-H(2) E-isomerase) (EC 5.3.99.3) [Cleaved into: Prostaglandin E synthase 2 truncated form], PTGES2, C9orf15 PGES2
Immunogen Species	Homo sapiens (Human)
Research Area	Signal Transduction
Target Names	PTGES2

Image



Western blot

All lanes: PTGES2 antibody at 3.77µg/ml

Lane 1: 293T whole cell lysate

Lane 2: HeLa whole cell lysate

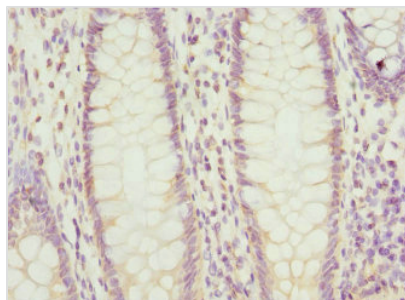
Lane 3: HepG2 whole cell lysate

Secondary

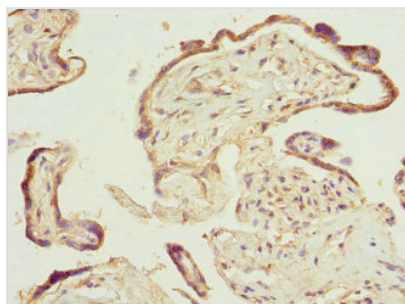
Goat polyclonal to rabbit IgG at 1/10000 dilution

Predicted band size: 42 kDa

Observed band size: 42 kDa



Immunohistochemistry of paraffin-embedded human colon cancer using CSB-PA018977ESR1HU at dilution of 1:100



Immunohistochemistry of paraffin-embedded human placenta tissue using CSB-PA018977ESR1HU at dilution of 1:100

Usage

For Research Use Only. Not for use in diagnostic or therapeutic procedures.