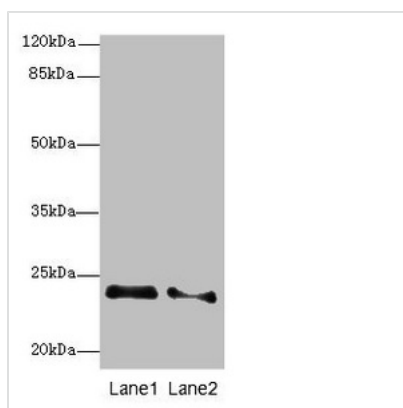




# RRAS2 Antibody

<b>Product Code</b>	CSB-PA020514ESR2HU
<b>Storage</b>	Upon receipt, store at -20°C or -80°C. Avoid repeated freeze.
<b>Uniprot No.</b>	P62070
<b>Immunogen</b>	Recombinant Human Ras-related protein R-Ras2 protein (1-204AA)
<b>Raised In</b>	Rabbit
<b>Species Reactivity</b>	Human, Mouse
<b>Tested Applications</b>	ELISA, WB, IHC; Recommended dilution: WB:1:1000-1:5000, IHC:1:20-1:200
<b>Form</b>	Liquid
<b>Conjugate</b>	Non-conjugated
<b>Storage Buffer</b>	PBS with 0.02% sodium azide, 50% glycerol, pH7.3.
<b>Purification Method</b>	Antigen Affinity Purified
<b>Isotype</b>	IgG
<b>Clonality</b>	Polyclonal
<b>Alias</b>	Ras-related protein R-Ras2 (Ras-like protein TC21) (Teratocarcinoma oncogene), RRAS2, TC21
<b>Immunogen Species</b>	Homo sapiens (Human)
<b>Research Area</b>	Signal Transduction
<b>Target Names</b>	RRAS2

## Image



### Western blot

All lanes: RRAS2 antibody at 2.66µg/ml

Lane 1: NIH/3T3 whole cell lysate

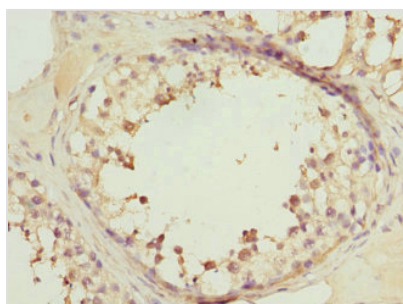
Lane 2: A431 whole cell lysate

Secondary

Goat polyclonal to rabbit IgG at 1/10000 dilution

Predicted band size: 24, 16, 20, 25 kDa

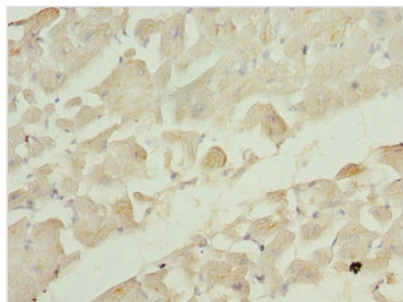
Observed band size: 24 kDa



Immunohistochemistry of paraffin-embedded

human testis tissue using CSB-

PA020514ESR2HU at dilution of 1:100



Immunohistochemistry of paraffin-embedded human heart tissue using CSB-PA020514ESR2HU at dilution of 1:100