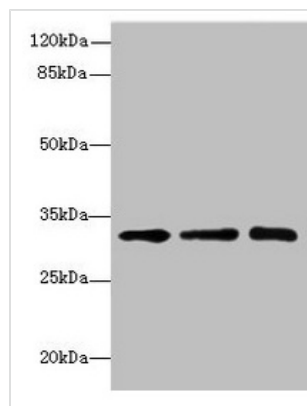




SGCD Antibody

Product Code	CSB-PA835688ESR1HU
Storage	Upon receipt, store at -20°C or -80°C. Avoid repeated freeze.
Uniprot No.	Q92629
Immunogen	Recombinant Human Delta-sarcoglycan protein (60-289AA)
Raised In	Rabbit
Species Reactivity	Human, Mouse
Tested Applications	ELISA, WB, IHC; Recommended dilution: WB:1:1000-1:5000, IHC:1:20-1:200
Form	Liquid
Conjugate	Non-conjugated
Storage Buffer	PBS with 0.02% sodium azide, 50% glycerol, pH7.3.
Purification Method	Antigen Affinity Purified
Isotype	IgG
Clonality	Polyclonal
Alias	Delta-sarcoglycan (Delta-SG) (35 kDa dystrophin-associated glycoprotein) (35DAG), SGCD
Immunogen Species	Homo sapiens (Human)
Research Area	Signal Transduction
Target Names	SGCD

Image



Western blot

All lanes: RRAS2 antibody at 4.55µg/ml

Lane 1: Mouse kidney tissue

Lane 2: Mouse liver tissue

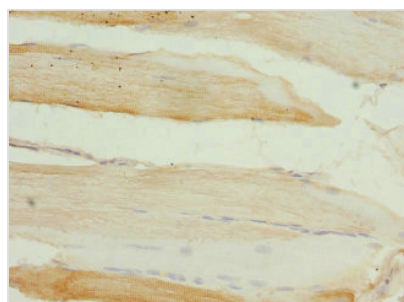
Lane 3: Jurkat whole cell lysate

Secondary

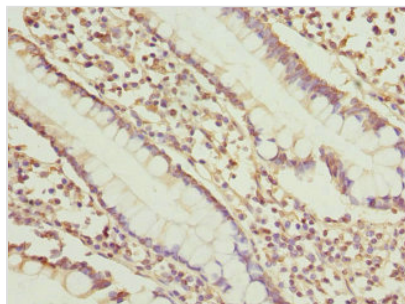
Goat polyclonal to rabbit IgG at 1/10000 dilution

Predicted band size: 33, 29 kDa

Observed band size: 33 kDa



Immunohistochemistry of paraffin-embedded human skeletal muscle tissue using CSB-PA835688ESR1HU at dilution of 1:100



Immunohistochemistry of paraffin-embedded human small intestine tissue using CSB-PA835688ESR1HU at dilution of 1:100

Usage

For Research Use Only. Not for use in diagnostic or therapeutic procedures.