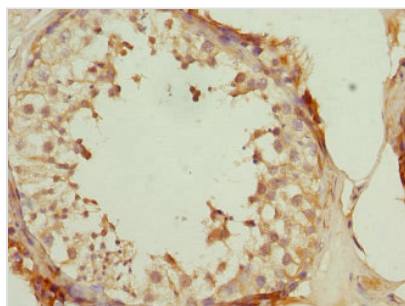




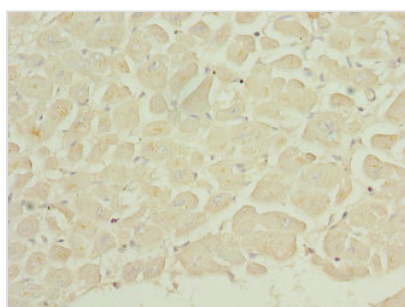
# DUSP22 Antibody

<b>Product Code</b>	CSB-PA865123DSR2HU
<b>Storage</b>	Upon receipt, store at -20°C or -80°C. Avoid repeated freeze.
<b>Uniprot No.</b>	Q9NRW4
<b>Immunogen</b>	Recombinant Human Dual specificity protein phosphatase 22 protein (1-184AA)
<b>Raised In</b>	Rabbit
<b>Species Reactivity</b>	Human
<b>Tested Applications</b>	ELISA, IHC; Recommended dilution: IHC:1:20-1:200
<b>Form</b>	Liquid
<b>Conjugate</b>	Non-conjugated
<b>Storage Buffer</b>	PBS with 0.02% sodium azide, 50% glycerol, pH7.3.
<b>Purification Method</b>	Antigen Affinity Purified
<b>Isotype</b>	IgG
<b>Clonality</b>	Polyclonal
<b>Alias</b>	Dual specificity protein phosphatase 22 (EC 3.1.3.16) (EC 3.1.3.48) (JNK-stimulatory phosphatase-1) (JSP-1) (Low molecular weight dual specificity phosphatase 2) (LMW-DSP2) (Mitogen-activated protein kinase phosphatase x) (MAP kinase phosphatase x) (MKP-x), DUSP22, JSP1 LMWDSP2 MKPX
<b>Immunogen Species</b>	Homo sapiens (Human)
<b>Research Area</b>	Cell Biology
<b>Target Names</b>	DUSP22

## Image



Immunohistochemistry of paraffin-embedded human testis tissue using CSB-PA865123DSR2HU at dilution of 1:100



Immunohistochemistry of paraffin-embedded human heart tissue using CSB-PA865123DSR2HU at dilution of 1:100



---

**Usage**

For Research Use Only. Not for use in diagnostic or therapeutic procedures.