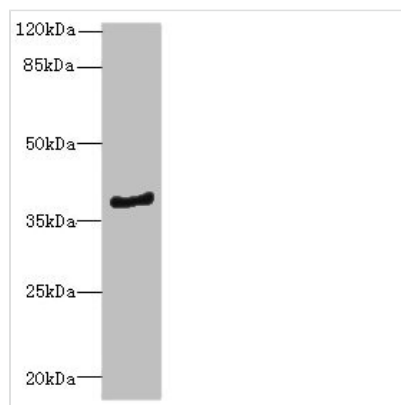




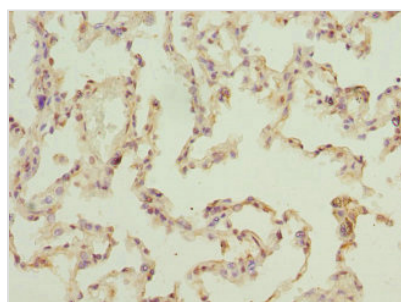
ELMOD1 Antibody

Product Code	CSB-PA839788ESR1HU
Storage	Upon receipt, store at -20°C or -80°C. Avoid repeated freeze.
Uniprot No.	Q8N336
Immunogen	Recombinant Human ELMO domain-containing protein 1 protein (185-334AA)
Raised In	Rabbit
Species Reactivity	Human, Mouse
Tested Applications	ELISA, WB, IHC; Recommended dilution: WB:1:1000-1:5000, IHC:1:20-1:200
Form	Liquid
Conjugate	Non-conjugated
Storage Buffer	PBS with 0.02% sodium azide, 50% glycerol, pH7.3.
Purification Method	Antigen Affinity Purified
Isotype	IgG
Clonality	Polyclonal
Alias	ELMO domain-containing protein 1, ELMOD1
Immunogen Species	Homo sapiens (Human)
Research Area	Signal Transduction
Target Names	ELMOD1

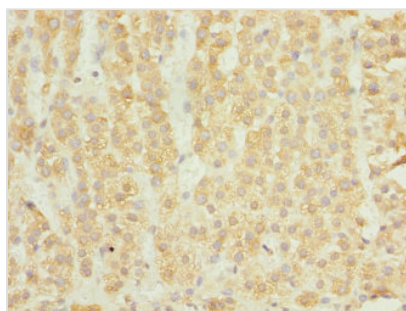
Image



Western blot
 All lanes: ELMOD1 antibody at 0.7µg/ml + Mouse kidney tissue
 Secondary
 Goat polyclonal to rabbit IgG at 1/10000 dilution
 Predicted band size: 40, 23, 39 kDa
 Observed band size: 40 kDa



Immunohistochemistry of paraffin-embedded human lung tissue using CSB-PA839788ESR1HU at dilution of 1:100



Immunohistochemistry of paraffin-embedded human adrenal gland tissue using CSB-PA839788ESR1HU at dilution of 1:100

Usage

For Research Use Only. Not for use in diagnostic or therapeutic procedures.