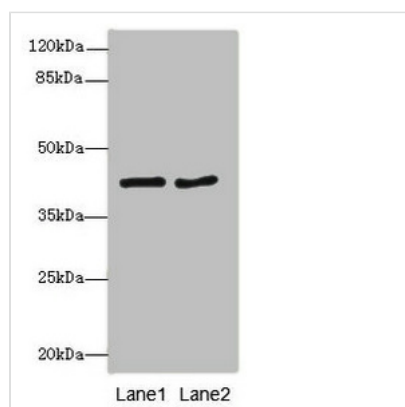




MTCH1 Antibody

Product Code	CSB-PA868369ESR1HU
Storage	Upon receipt, store at -20°C or -80°C. Avoid repeated freeze.
Uniprot No.	Q9NZJ7
Immunogen	Recombinant Human Mitochondrial carrier homolog 1 protein (100-250AA)
Raised In	Rabbit
Species Reactivity	Human
Tested Applications	ELISA, WB, IHC; Recommended dilution: WB:1:1000-1:5000, IHC:1:20-1:200
Form	Liquid
Conjugate	Non-conjugated
Storage Buffer	PBS with 0.02% sodium azide, 50% glycerol, pH7.3.
Purification Method	Antigen Affinity Purified
Isotype	IgG
Clonality	Polyclonal
Alias	Mitochondrial carrier homolog 1 (Presenilin-associated protein), MTCH1, PSAP
Immunogen Species	Homo sapiens (Human)
Research Area	Cell Biology
Target Names	MTCH1

Image



Western blot

All lanes: MTCH1 antibody at 2.32μg/ml

Lane 1: MCF-7 whole cell lysate

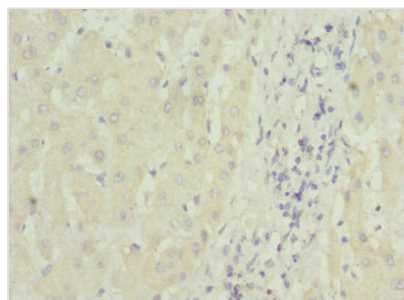
Lane 2: HepG2 whole cell lysate

Secondary

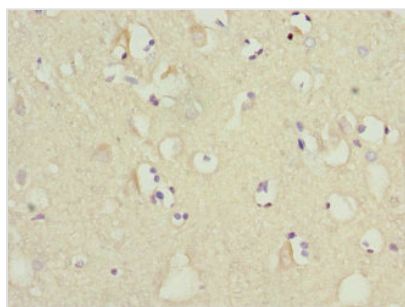
Goat polyclonal to rabbit IgG at 1/10000 dilution

Predicted band size: 42, 40, 20 kDa

Observed band size: 42 kDa



Immunohistochemistry of paraffin-embedded human liver tissue using CSB-PA868369ESR1HU at dilution of 1:100



Immunohistochemistry of paraffin-embedded human brain tissue using CSB-PA868369ESR1HU at dilution of 1:100