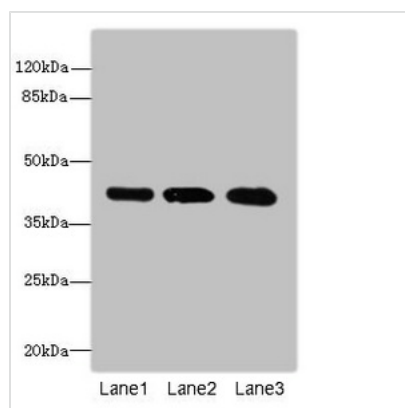




RRAGC Antibody

Product Code	CSB-PA867190ESR1HU
Storage	Upon receipt, store at -20°C or -80°C. Avoid repeated freeze.
Uniprot No.	Q9HB90
Immunogen	Recombinant Human Ras-related GTP-binding protein C protein (1-250AA)
Raised In	Rabbit
Species Reactivity	Human
Tested Applications	ELISA, WB, IHC; Recommended dilution: WB:1:1000-1:5000, IHC:1:20-1:200
Form	Liquid
Conjugate	Non-conjugated
Storage Buffer	PBS with 0.02% sodium azide, 50% glycerol, pH7.3.
Purification Method	Antigen Affinity Purified
Isotype	IgG
Clonality	Polyclonal
Alias	Ras-related GTP-binding protein C (Rag C) (RagC) (GTPase-interacting protein 2) (TIB929), RRAGC
Immunogen Species	Homo sapiens (Human)
Research Area	Cell Biology
Target Names	RRAGC

Image



Western blot

All lanes: RRAGC antibody at 1.14µg/ml

Lane 1: HeLa whole cell lysate

Lane 2: MCF-7 whole cell lysate

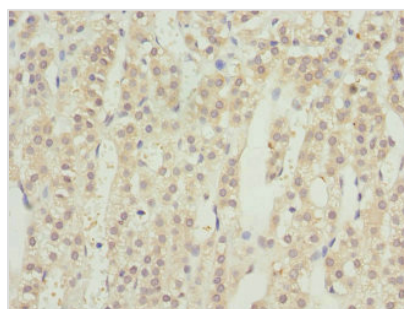
Lane 3: A549 whole cell lysate

Secondary

Goat polyclonal to rabbit IgG at 1/10000 dilution

Predicted band size: 44 kDa

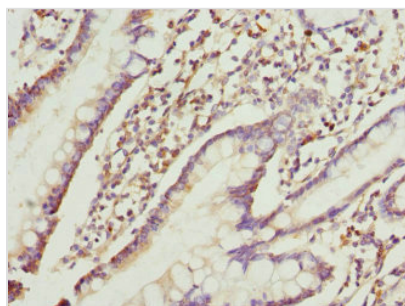
Observed band size: 44 kDa



Immunohistochemistry of paraffin-embedded

human adrenal gland tissue using CSB-

PA867190ESR1HU at dilution of 1:100



Immunohistochemistry of paraffin-embedded human small intestine tissue using CSB-PA867190ESR1HU at dilution of 1:100