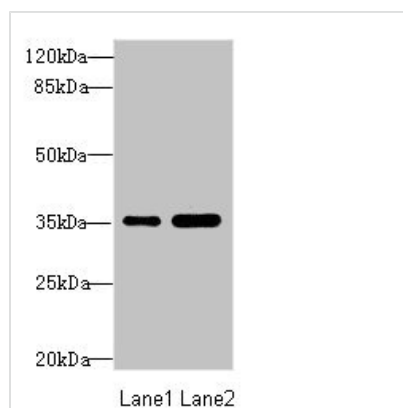




TOB2 Antibody

Product Code	CSB-PA617901ESR2HU
Storage	Upon receipt, store at -20°C or -80°C. Avoid repeated freeze.
Uniprot No.	Q14106
Immunogen	Recombinant Human Protein Tob2 protein (1-70AA)
Raised In	Rabbit
Species Reactivity	Human, Mouse
Tested Applications	ELISA, WB, IHC; Recommended dilution: WB:1:1000-1:5000, IHC:1:20-1:200
Form	Liquid
Conjugate	Non-conjugated
Storage Buffer	PBS with 0.02% sodium azide, 50% glycerol, pH7.3.
Purification Method	Antigen Affinity Purified
Isotype	IgG
Clonality	Polyclonal
Alias	Protein Tob2 (Protein Tob4) (Transducer of erbB-2 2), TOB2, KIAA1663 TOB4 TROB2
Immunogen Species	Homo sapiens (Human)
Research Area	Cell Biology
Target Names	TOB2

Image



Western blot

All lanes: TOB2 antibody at 1.89µg/ml

Lane 1: Mouse skeletal muscle tissue

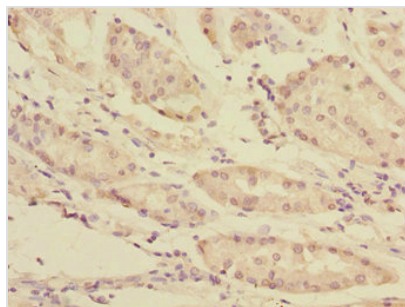
Lane 2: Mouse heart tissue

Secondary

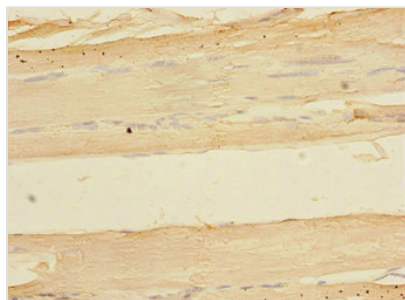
Goat polyclonal to rabbit IgG at 1/10000 dilution

Predicted band size: 37, 28 kDa

Observed band size: 37 kDa



Immunohistochemistry of paraffin-embedded human gastric cancer using CSB-PA617901ESR2HU at dilution of 1:100



Immunohistochemistry of paraffin-embedded human skeletal muscle tissue using CSB-PA617901ESR2HU at dilution of 1:100

Usage

For Research Use Only. Not for use in diagnostic or therapeutic procedures.