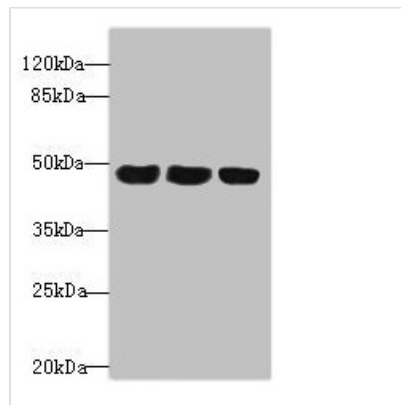




TXNDC5 Antibody

Product Code	CSB-PA847679ESR1HU
Storage	Upon receipt, store at -20°C or -80°C. Avoid repeated freeze.
Uniprot No.	Q8NBS9
Immunogen	Recombinant Human Thioredoxin domain-containing protein 5 protein (1-324AA)
Raised In	Rabbit
Species Reactivity	Human, Mouse
Tested Applications	ELISA, WB, IHC, IP; Recommended dilution: WB:1:1000-1:5000, IHC:1:20-1:200, IP:1:200-1:2000
Form	Liquid
Conjugate	Non-conjugated
Storage Buffer	PBS with 0.02% sodium azide, 50% glycerol, pH7.3.
Purification Method	Antigen Affinity Purified
Isotype	IgG
Clonality	Polyclonal
Alias	Thioredoxin domain-containing protein 5 (Endoplasmic reticulum resident protein 46) (ER protein 46) (ERp46) (Thioredoxin-like protein p46), TXNDC5, TLP46
Immunogen Species	Homo sapiens (Human)
Research Area	Cell Biology
Target Names	TXNDC5

Image



Western blot

All lanes: TXNDC5 antibody at 4.9µg/ml

Lane 1: HepG2 whole cell lysate

Lane 2: Colo320 whole cell lysate

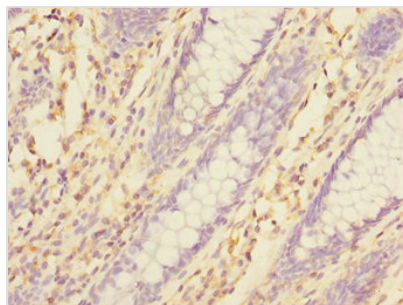
Lane 3: Mouse stomach tissue

Secondary

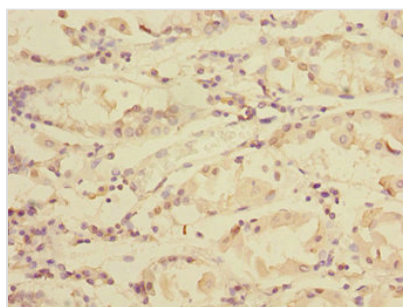
Goat polyclonal to rabbit IgG at 1/10000 dilution

Predicted band size: 48, 37 kDa

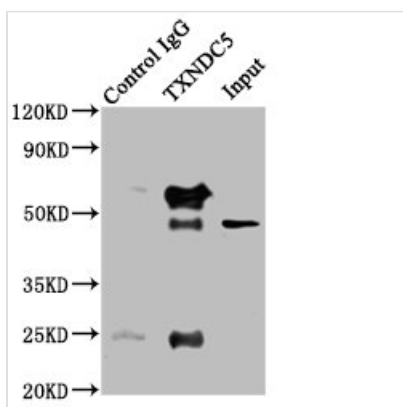
Observed band size: 48 kDa



Immunohistochemistry of paraffin-embedded human colon cancer using CSB-PA847679ESR1HU at dilution of 1:100



Immunohistochemistry of paraffin-embedded human gastric cancer using CSB-PA847679ESR1HU at dilution of 1:100



Immunoprecipitating TXNDC5 in HepG2 whole cell lysate
 Lane 1: Rabbit control IgG instead of CSB-PA847679ESR1HU in HepG2 whole cell lysate. For western blotting, a HRP-conjugated Protein G antibody was used as the secondary antibody (1/2000)
 Lane 2: CSB-PA847679ESR1HU (8µg) + HepG2 whole cell lysate (500µg)
 Lane 3: HepG2 whole cell lysate (10µg)

Usage

For Research Use Only. Not for use in diagnostic or therapeutic procedures.