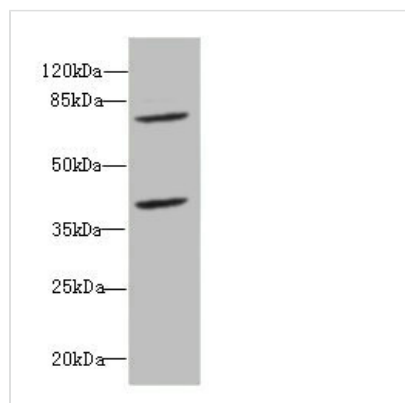




# CBFA2T2 Antibody

<b>Product Code</b>	CSB-PA004575ESR1HU
<b>Storage</b>	Upon receipt, store at -20°C or -80°C. Avoid repeated freeze.
<b>Uniprot No.</b>	O43439
<b>Immunogen</b>	Recombinant Human Protein CBFA2T2 protein (325-604AA)
<b>Raised In</b>	Rabbit
<b>Species Reactivity</b>	Human
<b>Tested Applications</b>	ELISA, WB, IHC; Recommended dilution: WB:1:1000-1:5000, IHC:1:20-1:200
<b>Form</b>	Liquid
<b>Conjugate</b>	Non-conjugated
<b>Storage Buffer</b>	PBS with 0.02% sodium azide, 50% glycerol, pH7.3.
<b>Purification Method</b>	Antigen Affinity Purified
<b>Isotype</b>	IgG
<b>Clonality</b>	Polyclonal
<b>Alias</b>	Protein CBFA2T2 (ETO homologous on chromosome 20) (MTG8-like protein) (MTG8-related protein 1) (Myeloid translocation-related protein 1) (p85), CBFA2T2, EHT MTGR1
<b>Immunogen Species</b>	Homo sapiens (Human)
<b>Research Area</b>	Tags & Cell Markers
<b>Target Names</b>	CBFA2T2

## Image



### Western blot

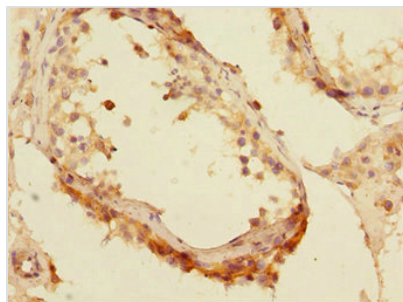
All lanes: CBFA2T2 antibody at 2.45µg/ml + Raji whole cell lysate

### Secondary

Goat polyclonal to rabbit IgG at 1/10000 dilution

Predicted band size: 68, 64, 29, 66 kDa

Observed band size: 68, 40 kDa



Immunohistochemistry of paraffin-embedded human testis tissue using CSB-PA004575ESR1HU at dilution of 1:100