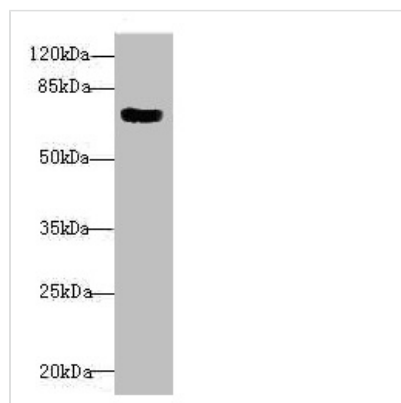




CBFA2T2 Antibody

Product Code	CSB-PA004575ESR2HU
Storage	Upon receipt, store at -20°C or -80°C. Avoid repeated freeze.
Uniprot No.	O43439
Immunogen	Recombinant Human Protein CBFA2T2 protein (325-604AA)
Raised In	Rabbit
Species Reactivity	Human
Tested Applications	ELISA, WB, IHC; Recommended dilution: WB:1:1000-1:5000, IHC:1:20-1:200
Form	Liquid
Conjugate	Non-conjugated
Storage Buffer	PBS with 0.02% sodium azide, 50% glycerol, pH7.3.
Purification Method	Antigen Affinity Purified
Isotype	IgG
Clonality	Polyclonal
Alias	Protein CBFA2T2 (ETO homologous on chromosome 20) (MTG8-like protein) (MTG8-related protein 1) (Myeloid translocation-related protein 1) (p85), CBFA2T2, EHT MTGR1
Immunogen Species	Homo sapiens (Human)
Research Area	Tags & Cell Markers
Target Names	CBFA2T2

Image



Western blot

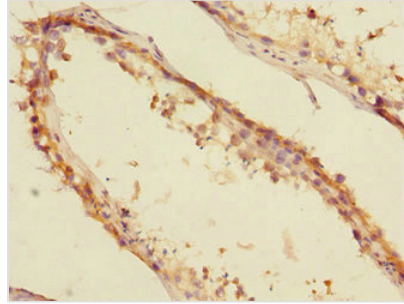
All lanes: CBFA2T2 antibody at 1.82µg/ml + 293T whole cell lysate

Secondary

Goat polyclonal to rabbit IgG at 1/10000 dilution

Predicted band size: 68, 64, 29, 66 kDa

Observed band size: 68 kDa



Immunohistochemistry of paraffin-embedded human testis tissue using CSB-PA004575ESR2HU at dilution of 1:100

Usage

For Research Use Only. Not for use in diagnostic or therapeutic procedures.