



CSRNP2 Antibody

Product Code	CSB-PA863949DSR1HU
Storage	Upon receipt, store at -20°C or -80°C. Avoid repeated freeze.
Uniprot No.	Q9H175
Immunogen	Recombinant Human Cysteine/serine-rich nuclear protein 2 protein (324-543AA)
Raised In	Rabbit
Species Reactivity	Human, Mouse
Tested Applications	ELISA, WB, IHC; Recommended dilution: WB:1:1000-1:5000, IHC:1:20-1:200
Form	Liquid
Conjugate	Non-conjugated
Storage Buffer	PBS with 0.02% sodium azide, 50% glycerol, pH7.3.
Purification Method	Antigen Affinity Purified
Isotype	IgG
Clonality	Polyclonal
Alias	Cysteine/serine-rich nuclear protein 2 (CSRNP-2) (Protein FAM130A1) (TGF-beta-induced apoptosis protein 12) (TAIP-12), CSRNP2, C12orf22 FAM130A1 TAIP12
Immunogen Species	Homo sapiens (Human)
Research Area	Cell Biology
Target Names	CSRNP2

Image



Western blot

All lanes: CSRNP2 antibody at 2.71 µg/ml

Lane 1: Mouse heart tissue

Lane 2: HepG2 whole cell lysate

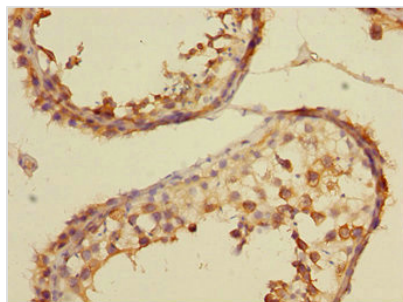
Lane 3: Mouse brain tissue

Secondary

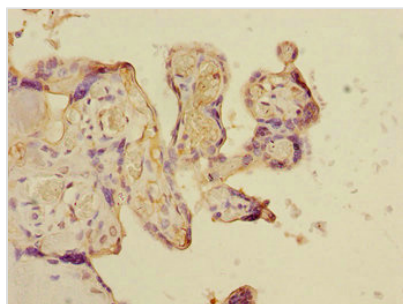
Goat polyclonal to rabbit IgG at 1/10000 dilution

Predicted band size: 60 kDa

Observed band size: 60 kDa



Immunohistochemistry of paraffin-embedded human testis tissue using CSB-PA863949DSR1HU at dilution of 1:100



Immunohistochemistry of paraffin-embedded human placenta tissue using CSB-PA863949DSR1HU at dilution of 1:100

Usage

For Research Use Only. Not for use in diagnostic or therapeutic procedures.