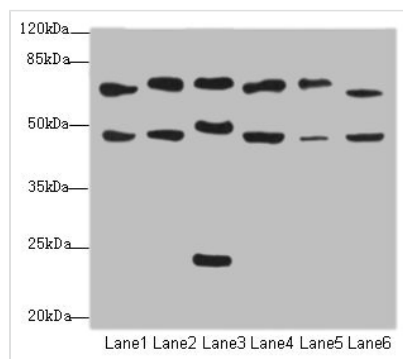




# CSRNP2 Antibody

<b>Product Code</b>	CSB-PA863949DSR2HU
<b>Storage</b>	Upon receipt, store at -20°C or -80°C. Avoid repeated freeze.
<b>Uniprot No.</b>	Q9H175
<b>Immunogen</b>	Recombinant Human Cysteine/serine-rich nuclear protein 2 protein (324-543AA)
<b>Raised In</b>	Rabbit
<b>Species Reactivity</b>	Human, Mouse
<b>Tested Applications</b>	ELISA, WB, IHC; Recommended dilution: WB:1:1000-1:5000, IHC:1:20-1:200
<b>Form</b>	Liquid
<b>Conjugate</b>	Non-conjugated
<b>Storage Buffer</b>	PBS with 0.02% sodium azide, 50% glycerol, pH7.3.
<b>Purification Method</b>	Antigen Affinity Purified
<b>Isotype</b>	IgG
<b>Clonality</b>	Polyclonal
<b>Alias</b>	Cysteine/serine-rich nuclear protein 2 (CSRNP-2) (Protein FAM130A1) (TGF-beta-induced apoptosis protein 12) (TAIP-12), CSRNP2, C12orf22 FAM130A1 TAIP12
<b>Immunogen Species</b>	Homo sapiens (Human)
<b>Research Area</b>	Cell Biology
<b>Target Names</b>	CSRNP2

## Image



### Western blot

All lanes: CSRNP2antibody at 2.34μg/ml

Lane 1: Mouse liver tissue

Lane 2: Mouse heart tissue

Lane 3: Mouse lung tissue

Lane 4: Mouse kidney tissue

Lane 5: HepG2 whole cell lysate

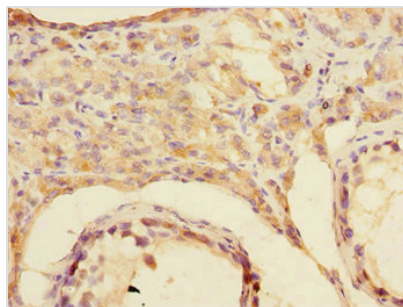
Lane 6: Mouse brain tissue

Secondary

Goat polyclonal to rabbit IgG at 1/10000 dilution

Predicted band size: 60 kDa

Observed band size: 60, 48, 24 kDa



Immunohistochemistry of paraffin-embedded human testis tissue using CSB-PA863949DSR2HU at dilution of 1:100