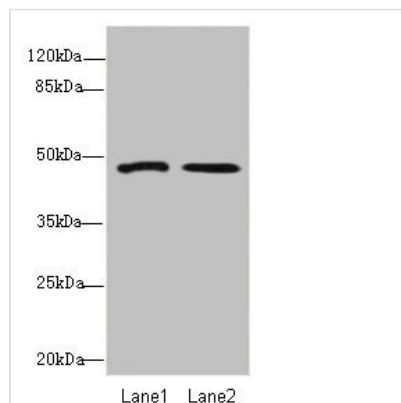




GCM1 Antibody

Product Code	CSB-PA868270ESR1HU
Storage	Upon receipt, store at -20°C or -80°C. Avoid repeated freeze.
Uniprot No.	Q9NP62
Immunogen	Recombinant Human Chorion-specific transcription factor GCMA protein (207-436AA)
Raised In	Rabbit
Species Reactivity	Human
Tested Applications	ELISA, WB, IHC; Recommended dilution: WB:1:1000-1:5000, IHC:1:20-1:200
Form	Liquid
Conjugate	Non-conjugated
Storage Buffer	PBS with 0.02% sodium azide, 50% glycerol, pH7.3.
Purification Method	Antigen Affinity Purified
Isotype	IgG
Clonality	Polyclonal
Alias	Chorion-specific transcription factor GCMA (hGCMA) (GCM motif protein 1) (Glial cells missing homolog 1), GCM1, GCMA
Immunogen Species	Homo sapiens (Human)
Research Area	Epigenetics and Nuclear Signaling
Target Names	GCM1

Image



Western blot

All lanes: GCM1 antibody at 1.67µg/ml

Lane 1: Hela whole cell lysate

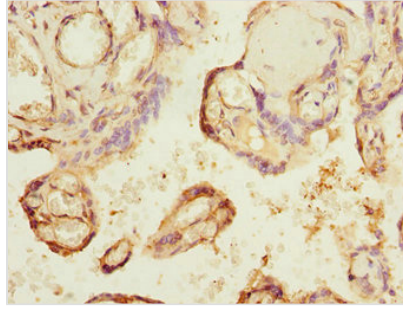
Lane 2: HepG2 whole cell lysate

Secondary

Goat polyclonal to rabbit IgG at 1/10000 dilution

Predicted band size: 49 kDa

Observed band size: 49 kDa



Immunohistochemistry of paraffin-embedded human placenta tissue using CSB-PA868270ESR1HU at dilution of 1:100

Usage

For Research Use Only. Not for use in diagnostic or therapeutic procedures.