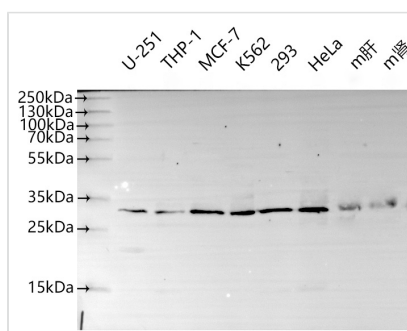




KLF9 Antibody

Product Code	CSB-PA622687ESR1HU
Storage	Upon receipt, store at -20°C or -80°C. Avoid repeated freeze.
Uniprot No.	Q13886
Immunogen	Synthesized peptide derived from human KLF9 AA range: 49-99aa
Raised In	Rabbit
Species Reactivity	Human, Mouse
Tested Applications	ELISA, WB, IHC; Recommended dilution: WB:1:500-1:2000, IHC:1:100-1:300
Form	Liquid
Storage Buffer	Liquid in PBS containing 50% glycerol, 0.5% BSA and 0.02% sodium azide.
Purification Method	Antigen Affinity Purified
Isotype	IgG
Clonality	Polyclonal
Product Type	Polyclonal Antibody
Immunogen Species	Homo sapiens (Human)
Research Area	Others
Target Names	KLF9

Image

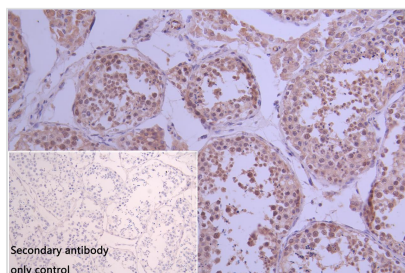


Western Blot

Positive WB detected in: U251 whole cell lysate(30µg), THP-1 whole cell lysate(30µg), MCF-7 whole cell lysate(30µg), K562 whole cell lysate(30µg), HEK293 whole cell lysate(30µg), HeLa whole cell lysate(30µg), Mouse liver tissue lysate(30µg), Mouse kidney tissue lysate(30µg)
All lanes: KLF9 antibody at 1:1000

Secondary

Goat polyclonal to rabbit IgG at 1/40000 dilution
Predicted band size: 27kDa
Observed band size: 27 kDa
Exposure time: 120s



IHC image of CSB-PA622687ESR1HU diluted at 1:100 and staining in paraffin-embedded human testis tissue performed on a Leica Bond™ system. After dewaxing and hydration, antigen retrieval was mediated by high pressure in a citrate buffer (pH 6.0). Section was blocked with 10% normal goat serum 30min at RT. Then primary antibody (1% BSA) was incubated at 4°C overnight. The primary is detected by a Goat anti-rabbit polymer IgG labeled by HRP and visualized using 0.05% DAB. Secondary antibody only control: uses 1% BSA instead of



primary antibody

Usage

For Research Use Only. Not for use in diagnostic or therapeutic procedures.