



# NR2E1 Antibody

<b>Product Code</b>	CSB-PA820920ESR1HU
<b>Storage</b>	Upon receipt, store at -20°C or -80°C. Avoid repeated freeze.
<b>Uniprot No.</b>	Q9Y466
<b>Immunogen</b>	Recombinant Human Nuclear receptor subfamily 2 group E member 1 protein (106-385AA)
<b>Raised In</b>	Rabbit
<b>Species Reactivity</b>	Human, Mouse
<b>Tested Applications</b>	ELISA, WB, IHC; Recommended dilution: WB:1:1000-1:5000, IHC:1:20-1:200
<b>Form</b>	Liquid
<b>Conjugate</b>	Non-conjugated
<b>Storage Buffer</b>	PBS with 0.02% sodium azide, 50% glycerol, pH7.3.
<b>Purification Method</b>	Antigen Affinity Purified
<b>Isotype</b>	IgG
<b>Clonality</b>	Polyclonal
<b>Alias</b>	Nuclear receptor subfamily 2 group E member 1 (Nuclear receptor TLX) (Protein tailless homolog) (TII) (hTII), NR2E1, TLX
<b>Immunogen Species</b>	Homo sapiens (Human)
<b>Research Area</b>	Neuroscience
<b>Target Names</b>	NR2E1

## Image



Western blot

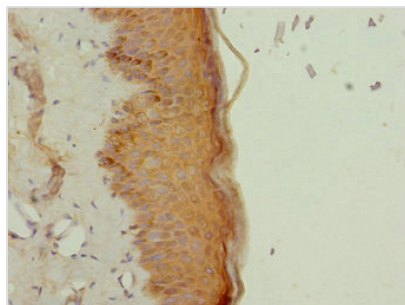
All lanes: NR2E1 antibody at 3.2µg/ml + Mouse brain tissue

Secondary

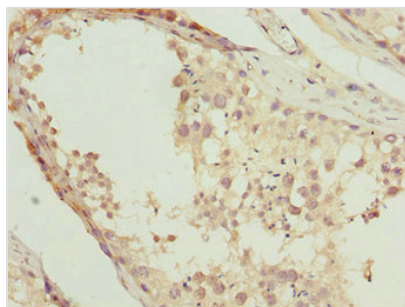
Goat polyclonal to rabbit IgG at 1/10000 dilution

Predicted band size: 43, 47 kDa

Observed band size: 43 kDa



Immunohistochemistry of paraffin-embedded human skin tissue using CSB-PA820920ESR1HU at dilution of 1:100



Immunohistochemistry of paraffin-embedded human testis tissue using CSB-PA820920ESR1HU at dilution of 1:100