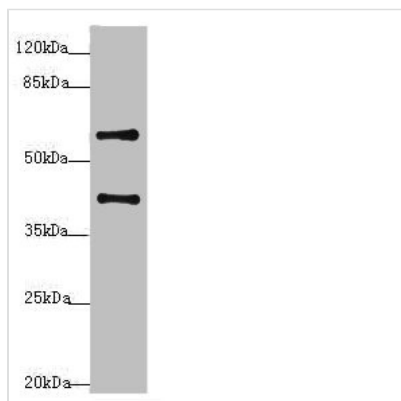




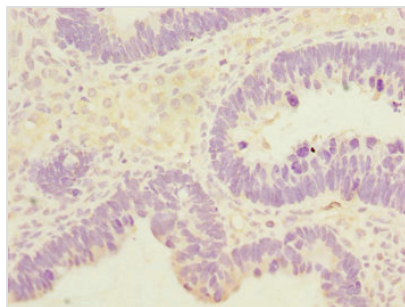
SYCE1 Antibody

Product Code	CSB-PA022987ESR1HU
Storage	Upon receipt, store at -20°C or -80°C. Avoid repeated freeze.
Uniprot No.	Q8N0S2
Immunogen	Recombinant Human Synaptonemal complex central element protein 1 protein (132-351AA)
Raised In	Rabbit
Species Reactivity	Human, Mouse
Tested Applications	ELISA, WB, IHC; Recommended dilution: WB:1:1000-1:5000, IHC:1:20-1:200
Form	Liquid
Conjugate	Non-conjugated
Storage Buffer	PBS with 0.02% sodium azide, 50% glycerol, pH7.3.
Purification Method	Antigen Affinity Purified
Isotype	IgG
Clonality	Polyclonal
Alias	Synaptonemal complex central element protein 1 (Cancer/testis antigen 76) (CT76), SYCE1, C10orf94
Immunogen Species	Homo sapiens (Human)
Research Area	Cell Biology
Target Names	SYCE1

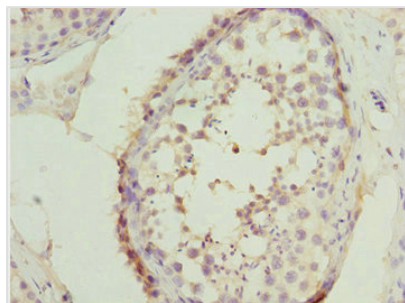
Image



Western blot
 All lanes: SYCE1 antibody at 3.38μg/ml + Mouse liver tissue
 Secondary
 Goat polyclonal to rabbit IgG at 1/10000 dilution
 Predicted band size: 40, 33, 22 kDa
 Observed band size: 40, 58 kDa



Immunohistochemistry of paraffin-embedded human ovarian cancer using CSB-PA022987ESR1HU at dilution of 1:100



Immunohistochemistry of paraffin-embedded human testis tissue using CSB-PA022987ESR1HU at dilution of 1:100